**KUVS17-B**

Linear recirculating ball bearing unit

linear recirculating ball bearing units for guideway with raceways on both sides

Technical information

Your current product variant

Size code 17

Suffix B

Main Dimensions & Performance Data

H 18 mm Height system

B 116 mm Width system

L 96 mm Length linear recirculating ball bearing units

h 17 mm Height rail

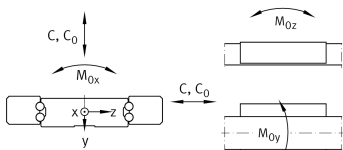
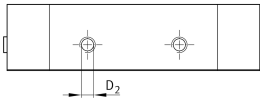
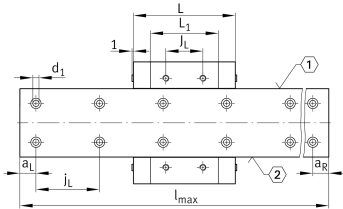
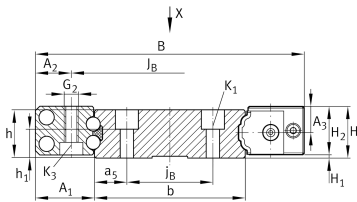
b 71 mm Width rail

l_{max} 2.940 mm Max. length rail

C 26.000 N Load capacity dyn C

C₀ 46.500 N Load capacity dynM_{0X} 1.872 Nm Moment ratings M0XM_{0Y} 492 Nm Moment ratings M0YM_{0Z} 492 Nm Moment ratings M0Z

≈m 199 g Weight





Mounting dimensions

A ₁	22,5 mm	
A ₂	13 mm	
J _B	90 mm	
j _B	50 mm	
a ₅	10,5 mm	
L ₁	64 mm	
J _L	35 mm	
j _L	60 mm	
a _{Lmin}	20 mm	
a _{Lmax}	53 mm	
a _{Rmin}	20 mm	
a _{Rmax}	53 mm	
H ₁	0,5 mm	Free space, system dimension
H ₂	17,5 mm	Height linear recirculating ball bearing units
A ₃	9,5 mm	
h ₁	8,3 mm	
K ₁	M5	Thread
K _{1 MA}	10 Nm	Tightening torque
G ₂	M6	Thread
G _{2 MA}	10 Nm	Tightening torque
K ₃	M4	Thread
K _{3 MA}	3 Nm	Tightening torque
d ₁	6 mm	Diameter
D ₂	4,9 mm	Diameter



View product details on medias

26.04.2026, 09:12:12 UTC

SCHAEFFLER

Related products

TKVD71	Associated rail(s)
KA10-TN	Closing plug rail