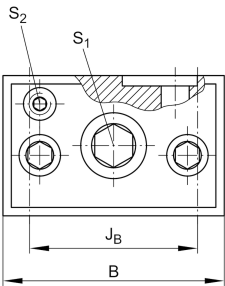




VUS19069-A [↗](#) Adjusting gib

Technical information

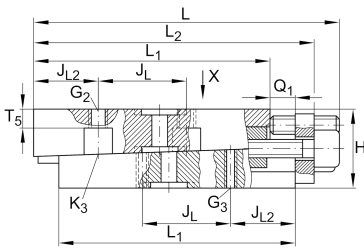


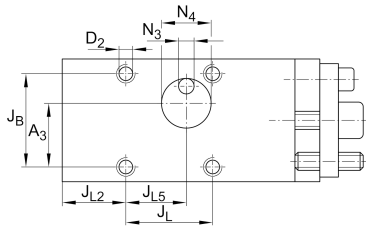
Your current product variant

Size code	19069
Version	A

Main Dimensions & Performance Data

L	78 mm	Length max
H	16 mm	Height min
B	26,5 mm	Width
≈m	0,204 kg	Weight





Mounting dimensions

L ₁	62 mm	
L ₂	73 mm	Max
J _B	20,6 mm	
Tol J _B	+ 0,1 mm	Upper tolerance
Tol J _B	- 0,1 mm	Lower tolerance
J _L	25,5 mm	
Tol J _L	+ 0,1 mm	Upper tolerance
Tol J _L	- 0,1 mm	Lower tolerance
J _{L2}	16,5 mm	
J _{L5}	16,5 mm	
Q ₁	7 mm	Max
A ₃	14,9 mm	
N ₃	3,5 mm	
N ₄	12 mm	
T ₅	4 mm	



Additional information

S ₁	3 mm	Adjustment screw hexagon socket
S ₂	2 mm	Locking/extraction screw hexagon socket
G ₂	M4	Fixing screws DIN ISO4762-12.9
M _{A G2}	5 Nm	Tightening torque
G ₃	M3	Fixing screws DIN ISO4762-12.9
M _{A G3}	1,8 Nm	Tightening torque
K ₃	M3	Fixing screws DIN ISO4762-12.9
M _{A K3}	1,8 Nm	Tightening torque
D ₂	3,5 mm	Core hole
Δh	0,35 mm	Adjustment max
	0,035 mm	Adjustment per screw revolution

Related products

RUS19069	For linear roller bearing
----------	---------------------------