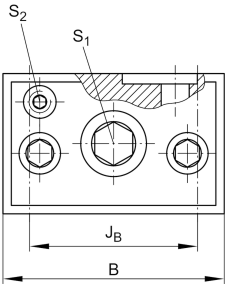




### VUS19105-A [↗](#)

Adjusting gib

## Technical information

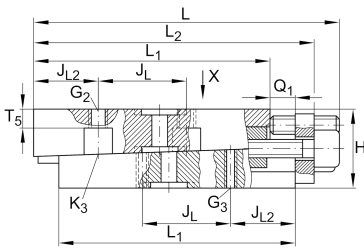


### Your current product variant

Size code	19105
Version	A

### Main Dimensions & Performance Data

L	123 mm	Length max
H	16 mm	Height min
B	26,5 mm	Width
≈m	0,33 kg	Weight

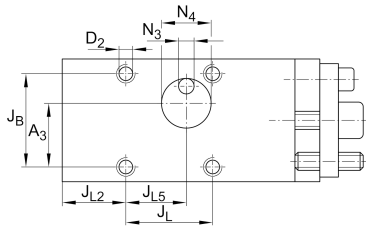




View product details on medias

27.04.2026, 07:33:39 UTC

SCHAEFFLER



### Mounting dimensions

L <sub>1</sub>	100 mm	
L <sub>2</sub>	119 mm	Max
J <sub>B</sub>	20,6 mm	
Tol J <sub>B</sub>	+ 0,1 mm	Upper tolerance
Tol J <sub>B</sub>	- 0,1 mm	Lower tolerance
J <sub>L</sub>	50 mm	
Tol J <sub>L</sub>	+ 0,1 mm	Upper tolerance
Tol J <sub>L</sub>	- 0,1 mm	Lower tolerance
J <sub>L2</sub>	25 mm	
J <sub>L5</sub>	29 mm	
Q <sub>1</sub>	15 mm	Max
A <sub>3</sub>	14,9 mm	
N <sub>3</sub>	3,5 mm	
N <sub>4</sub>	12 mm	
T <sub>5</sub>	3,5 mm	



### Additional information

S <sub>1</sub>	3 mm	Adjustment screw hexagon socket
S <sub>2</sub>	2,5 mm	Locking/extraction screw hexagon socket
G <sub>2</sub>	M4	Fixing screws DIN ISO4762-12.9
M <sub>A</sub> G <sub>2</sub>	5 Nm	Tightening torque
G <sub>3</sub>	M3	Fixing screws DIN ISO4762-12.9
M <sub>A</sub> G <sub>3</sub>	1,8 Nm	Tightening torque
K <sub>3</sub>	M3	Fixing screws DIN ISO4762-12.9
M <sub>A</sub> K <sub>3</sub>	1,8 Nm	Tightening torque
D <sub>2</sub>	3,5 mm	Core hole
Δh	0,5 mm	Adjustment max
	0,023 mm	Adjustment per screw revolution

### Related products

RUS19105

For linear roller bearing