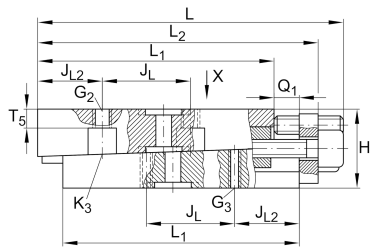
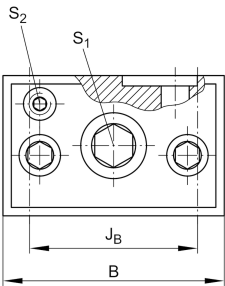




VUS26102-A

Adjusting gib

Technical information

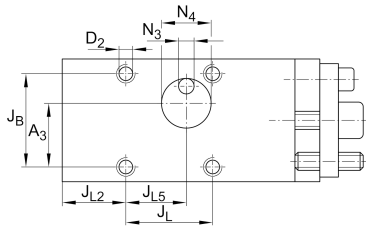


Your current product variant

Size code	26102
Version	A

Main Dimensions & Performance Data

L	113 mm	Length max
H	25 mm	Height min
B	39,5 mm	Width
≈m	0,71 kg	Weight



Mounting dimensions

L ₁	91 mm	
L ₂	105 mm	Max
J _B	30 mm	
Tol J _B	+ 0,1 mm	Upper tolerance
Tol J _B	- 0,1 mm	Lower tolerance
J _L	44 mm	
Tol J _L	+ 0,1 mm	Upper tolerance
Tol J _L	- 0,1 mm	Lower tolerance
J _{L2}	20,5 mm	
J _{L5}	27,5 mm	
Q ₁	8 mm	Max
A ₃	20,5 mm	
A ₄	16 mm	
N ₃	5 mm	
N ₄	16 mm	
T ₅	6 mm	



Additional information

S 1	6 mm	Adjustment screw hexagon socket
S 2	3 mm	Locking/extraction screw hexagon socket
G 2	M6	Fixing screws DIN ISO4762-12.9
M A G2	17 Nm	Tightening torque
G 3	M4	Fixing screws DIN ISO4762-12.9
M A G3	5 Nm	Tightening torque
K 3	M4	Fixing screws DIN ISO4762-12.9
M A K3	5 Nm	Tightening torque
D 2	4,9 mm	Core hole
Δh	0,4 mm	Adjustment max
	0,05 mm	Adjustment per screw revolution

Related products

RUS26102	For linear roller bearing
----------	---------------------------