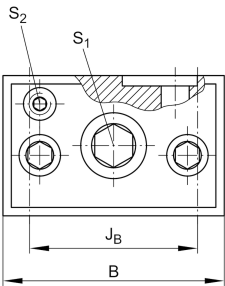




VUS38206-A

Adjusting gib

Technical information

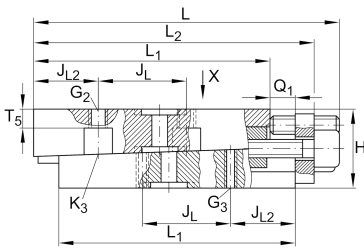


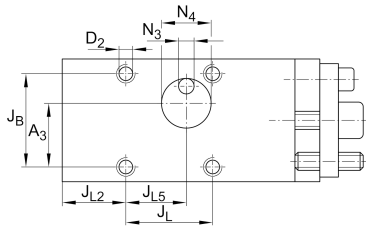
Your current product variant

Size code	38206
Version	A

Main Dimensions & Performance Data

L	250 mm	Length max
H	25 mm	Height min
B	51,5 mm	Width
≈m	2,08 kg	Weight





Mounting dimensions

L ₁	200 mm	
L ₂	240 mm	Max
J _B	41 mm	
Tol J _B	+ 0,1 mm	Upper tolerance
Tol J _B	- 0,1 mm	Lower tolerance
J _L	102 mm	
Tol J _L	+ 0,1 mm	Upper tolerance
Tol J _L	- 0,1 mm	Lower tolerance
J _{L2}	49 mm	
J _{L5}	61 mm	
Q ₁	30 mm	Max
A ₃	28,25 mm	
N ₃	5 mm	
N ₄	22 mm	
T ₅	5 mm	

Additional information

S ₁	8 mm	Adjustment screw hexagon socket
S ₂	5 mm	Locking/extraction screw hexagon socket
G ₃	M6	Fixing screws DIN ISO4762-12.9
M _{A G3}	17 Nm	Tightening torque
K ₃	M6	Fixing screws DIN ISO4762-12.9
M _{A K3}	17 Nm	Tightening torque
D ₂	6,9 mm	Core hole
Δh	1 mm	Adjustment max
	0,05 mm	Adjustment per screw revolution



View product details on medias

30.04.2026, 12:59:07 UTC

SCHAEFFLER

Related products

RUS38206

For linear roller bearing