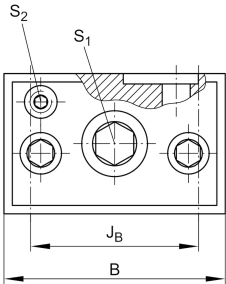




VUS65210 [↗](#)

Adjusting gib

Technical information

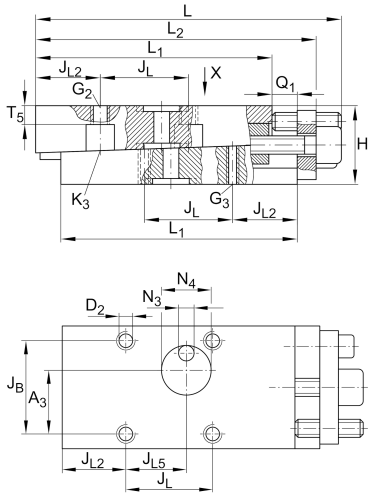


Your current product variant

Size code 65210

Main Dimensions & Performance Data

L	234 mm	Length max
H	38 mm	Height min
B	75 mm	Width
≈m	4,5 kg	Weight



Mounting dimensions

L ₁	200 mm	
L ₂	220 mm	Max
J _B	62 mm	
Tol J _B	+ 0,1 mm	Upper tolerance
Tol J _B	- 0,1 mm	Lower tolerance
J _L	76 mm	
Tol J _L	+ 0,1 mm	Upper tolerance
Tol J _L	- 0,1 mm	Lower tolerance
J _{L2}	62 mm	
J _{L5}	40,5 mm	
Q ₁	10 mm	Max
A ₃	30,9 mm	
A ₄	21,6 mm	
N ₃	8 mm	
N ₄	8 mm	
T ₅	7 mm	



Additional information

S ₁	12 mm	Adjustment screw hexagon socket
S ₂	5 mm	Locking/extraction screw hexagon socket
G ₂	M10	Fixing screws DIN ISO4762-12.9
M _{A G2}	83 Nm	Tightening torque
G ₃	M8	Fixing screws DIN ISO4762-12.9
M _{A G3}	41 Nm	Tightening torque
K ₃	M8	Fixing screws DIN ISO4762-12.9
M _{A K3}	41 Nm	Tightening torque
D ₂	9 mm	Core hole
Δh	0,5 mm	Adjustment max
	0,075 mm	Adjustment per screw revolution

Related products

RUS65210	For linear roller bearing
----------	---------------------------