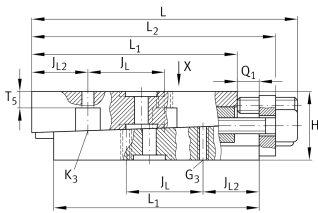
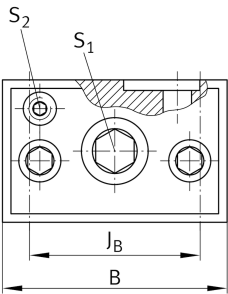




### VUSZ24084-A

Adjusting gib

## Technical information

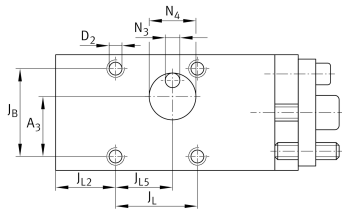


### Your current product variant

Size code	24084
Version	A

### Main Dimensions & Performance Data

L	141 mm	Length max
H	30 mm	Height min
B	50 mm	Width
≈m	1,37 kg	Weight



### Mounting dimensions

L <sub>1</sub>	115 mm	
L <sub>2</sub>	131 mm	Max
J <sub>B</sub>	41 mm	
Tol J <sub>B</sub>	+ 0,1 mm	Upper tolerance
Tol J <sub>B</sub>	- 0,1 mm	Lower tolerance
J <sub>L</sub>	51 mm	
Tol J <sub>L</sub>	+ 0,1 mm	Upper tolerance
Tol J <sub>L</sub>	- 0,1 mm	Lower tolerance
J <sub>L2</sub>	28 mm	
J <sub>L5</sub>	30,5 mm	
Q <sub>1</sub>	8 mm	Max
A <sub>3</sub>	28,5 mm	
N <sub>3</sub>	5 mm	
N <sub>4</sub>	22 mm	
T <sub>5</sub>	7 mm	

### Additional information

S <sub>1</sub>	8 mm	Adjustment screw hexagon socket
S <sub>2</sub>	4 mm	Locking/extraction screw hexagon socket
G <sub>3</sub>	M5	Fixing screws DIN ISO4762-12.9
M <sub>A G3</sub>	10 Nm	Tightening torque
K <sub>3</sub>	M5	Fixing screws DIN ISO4762-12.9
M <sub>A K3</sub>	10 Nm	Tightening torque
D <sub>2</sub>	6 mm	Core hole
Δh	0,4 mm	Adjustment max
	0,062 mm	Adjustment per screw revolution



View product details on medias

23.04.2026, 15:14:42 UTC

SCHAEFFLER

### Related products

---

PR14089

For linear roller bearing