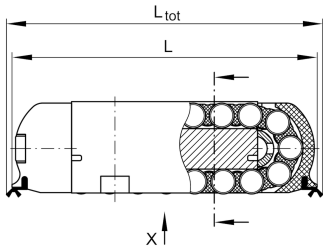
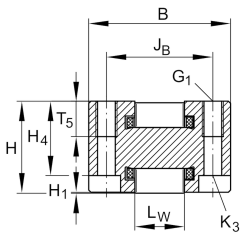


### RUS19069-KS [↗](#)

#### Linear recirculating roller bearing unit

Linear roller bearings with spacer elements, with end face lubrication connectors RUS..

### Technical information

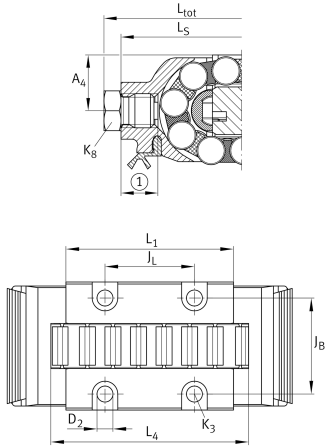


#### Your current product variant

Suffix code (version)	KS	With end face lubrication connectors
Size code	19069	

#### Main Dimensions & Performance Data

L <sub>tot</sub>	82 mm	Total length
B	27 mm	Width
H	19 mm	Height
C	42.000 N	Basic dynamic load rating
C <sub>0</sub>	66.000 N	Basic static load rating
≈m	0,208 kg	Weight



### Mounting dimensions

L <sub>1</sub>	43,8 mm	Mounting dimension
J <sub>B</sub>	20,6 mm	Mounting dimension
Tol J <sub>B</sub>	± 0,1 mm	Tolerance
J <sub>L</sub>	25,5 mm	
Tol J <sub>L</sub>	± 0,1 mm	Tolerance
H <sub>1</sub>	0,2 mm	
L <sub>4</sub>	50 mm	Minimum support length
L <sub>W</sub>	10 mm	
H <sub>4</sub>	15,2 mm	
T <sub>5</sub>	6,2 mm	
G <sub>1</sub>	M4	Fixing screws top (DIN ISO 4762-12.9)
G1 M <sub>A</sub>	5 Nm	Tightening torque fixing screws
K <sub>3</sub>	M3	Fixing screws below (DIN ISO 4762-12.9)
K3 M <sub>A</sub> max	1,8 Nm	Tightening torque fixing screws
D <sub>2</sub>	3,5 mm	
L <sub>S</sub>	76 mm	
A <sub>4</sub>	9,8 mm	
	M6	Lubrication connection DIN3405-A
	6 mm	

### Related products

VUS19069-A	Adjustment gib
UG6628, UGN6628, UZ6628, UZN6628, UFB4710	Suitable Guide rail