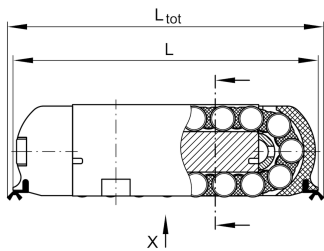
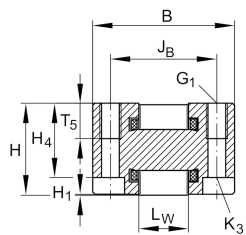


RUS19105 [↗](#)

Linear recirculating roller bearing unit

Linear roller bearings with spacer elements
RUS..

Technical information

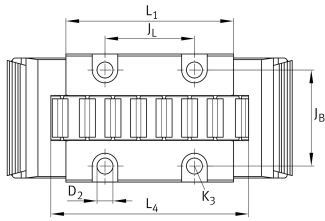


Your current product variant

Size code	19105
-----------	-------

Main Dimensions & Performance Data

L _{tot}	109 mm	Total length
L	105,5 mm	
B	27 mm	Width
H	19 mm	Height
C	68.000 N	Basic dynamic load rating
C ₀	123.000 N	Basic static load rating
≈m	0,29 kg	Weight



Mounting dimensions

L ₁	79 mm	Mounting dimension
J _B	20,6 mm	Mounting dimension
Tol J _B	± 0,1 mm	Tolerance
J _L	50 mm	
Tol J _L	± 0,1 mm	Tolerance
H ₁	0,2 mm	
L ₄	85 mm	Minimum support length
L _W	10 mm	
H ₄	15,2 mm	
T ₅	6,2 mm	
G ₁	M4	Fixing screws top (DIN ISO 4762-12.9)
G1 M _A	5 Nm	Tightening torque fixing screws
K ₃	M3	Fixing screws below (DIN ISO 4762-12.9)
K3 M _A max	1,8 Nm	Tightening torque fixing screws
D ₂	3,5 mm	
	6 mm	

Related products

VUS19105-A	Adjustment gib
UG6628, UGN6628, UZ6628, UZN6628, UFK3210, UFB4710	Suitable Guide rail