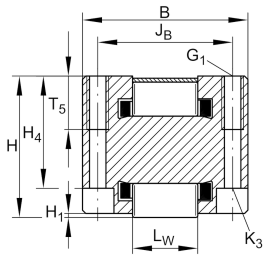


RUS85280

Linear recirculating roller bearing unit

Linear roller bearings with spacer elements
RUS..

Technical information

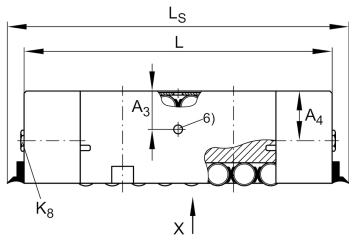


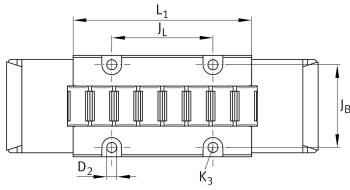
Your current product variant

Size code 85280

Main Dimensions & Performance Data

L _{tot}	301 mm	Total length
L	280,1 mm	
B	104 mm	Width
H	85 mm	Height
C	840.000 N	Basic dynamic load rating
C ₀	1.324.000 N	Basic static load rating
≈m	10,17 kg	Weight





Mounting dimensions

L ₁	184,6 mm	Mounting dimension
J _B	82,5 mm	Mounting dimension
Tol J _B	± 0,1 mm	Tolerance
J _L	101,5 mm	
Tol J _L	± 0,1 mm	Tolerance
H ₁	0,5 mm	
L _W	40 mm	
A ₃	33 mm	
H ₄	73,3 mm	
T ₅	30,2 mm	
G ₁	M14	Fixing screws top (DIN ISO 4762-12.9)
G1 M _A	229 Nm	Tightening torque fixing screws
K ₃	M10	Fixing screws below (DIN ISO 4762-12.9)
K3 M _A max	83 Nm	Tightening torque fixing screws
D ₂	11,8 mm	
L _S	303 mm	
A ₄	45 mm	
	M8x1	Lubrication connection DIN3405-A
	6 mm	

Related products

VUS85280	Adjustment gib
UFK11518, UFB140185	Suitable Guide rail