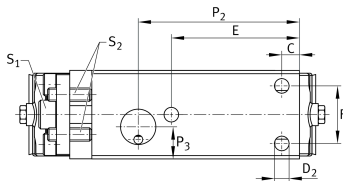
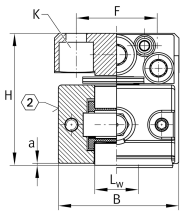


RUSV42102-KS [↗](#)

Linear recirculating roller bearing unit

Linear roller bearings, with spacer elements, with integrated adjusting gib, RUSV...-KS

Technical information

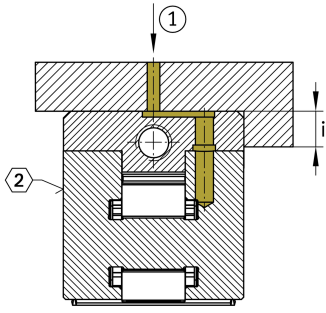


Your current product variant

Size	42102
Suffix	KS With end face lubrication connectors

Main Dimensions & Performance Data

L	114 mm	Length total
B	40 mm	Width
H	42 mm	Height
C	95.000 N	Basic dynamic load capacity
C ₀	151.000 N	Basic static load capacity
≈m	1,04 kg	Weight

**Mounting dimensions**

L	102 mm	
L ₁	108 mm	
L ₃	68,4 mm	
L ₄	70 mm	
a	0,3 mm	
L _W	14 mm	
C	8 mm	
E	38 mm	Mounting dimension
F	26 mm	
i	6 mm	Mounting dimension
P ₁	29,5 mm	
d ₁	16 mm	
P ₂	53 mm	
P ₃	14,5 mm	
d	3 mm	
K	M6	Lubrication connector DIN3405-A
S ₁	6 mm	Hexagon socket adjusting screw
S ₂	3 mm	Hexagon socket counter forcing screw
K	M6	Size thread k DIN
K _{MA}	17 Nm	Tightening torque fixing screws
D ₂	6,6 mm	
A _{max}	10 mm	Screw stroke A
Delta h _{max}	0,52 mm	Adjustment maximum
	0,05 mm	Adjustment screw revolution



View product details on medias

18.04.2026, 13:27:00 UTC

SCHAEFFLER

Related products

UG9741, UGN9741-A, UZ9741, UZN9741-A, UFK4710, UFB6412

Suitable Guide Rails