

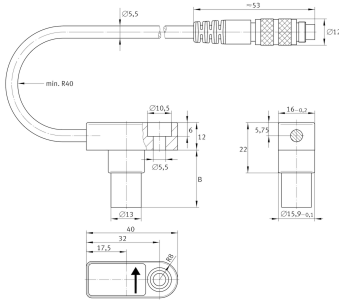


### MEKOKAB150/180/325-WH-AL-B-KABELL:300CM [↗](#)

cabl

cabl

## Technical information



### Your current product variant

Cable length 3 m

### Mounting dimensions

	5,5 mm	Bore diameter sensor MEKOKAB
≈m	50 g	Weight

### Main dimensions

	34,5 mm	Length MEKOKAB (total)
B	22,5 mm	Length MEKOKAB cylindrical housing
	13 mm	Diameter sensor housing MEKOKAB
	40 mm	Flange length sensor MEKOKAB
	16 mm	Flange width sensor MEKOKAB

### Temperature range

	IP65	Ingress Protection
	70 °C	Operating temperature max.
	0 °C	Operating temperature min.

### Additional information

	white	Color
	ISO4762-M5x12-8.8	Cap head screws MEKOKAB
	6 Nm	Bolting Torque max.
	5,4 Nm	Bolting torque min.