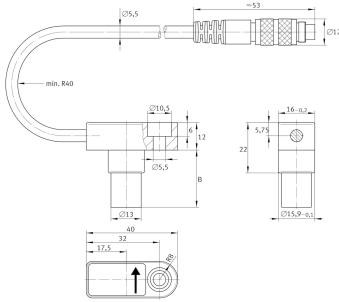
**MEKOKAB260/395/460-YE-AL-B-KABELL:300CM** [↗](#)

cable

cable

## Technical information

**Your current product variant**

Cable length 3 m

**Mounting dimensions**

|    |        |                              |
|----|--------|------------------------------|
|    | 5,5 mm | Bore diameter sensor MEKOKAB |
| ≈m | 50 g   | Weight                       |

**Main dimensions**

|   |       |                                    |
|---|-------|------------------------------------|
|   | 37 mm | Length MEKOKAB (total)             |
| B | 25 mm | Length MEKOKAB cylindrical housing |
|   | 13 mm | Diameter sensor housing MEKOKAB    |
|   | 40 mm | Flange length sensor MEKOKAB       |
|   | 16 mm | Flange width sensor MEKOKAB        |

**Temperature range**

|  |       |                            |
|--|-------|----------------------------|
|  | IP65  | Ingress Protection         |
|  | 70 °C | Operating temperature max. |
|  | 0 °C  | Operating temperature min. |

**Additional information**

|  |                   |                         |
|--|-------------------|-------------------------|
|  | yellow            | Color                   |
|  | ISO4762-M5x12-8.8 | Cap head screws MEKOKAB |
|  | 6 Nm              | Bolting Torque max.     |
|  | 5,4 Nm            | Bolting torque min.     |