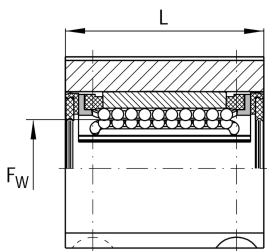
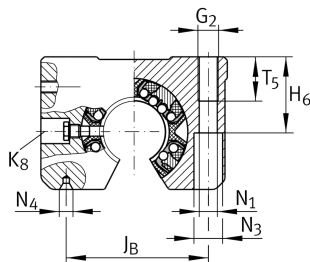
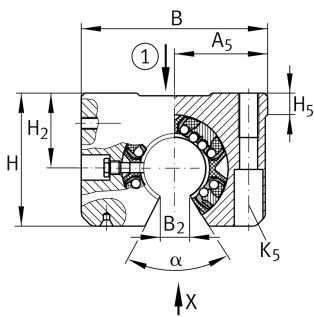
**KGSNO16-PP-AS**

Linear Ball Bearing and Housing Unit

Linear ball bearing and housing unit; Heavy duty range, With segment cutout, without slot, sealed, greased, with relubrication facility

Technical information

**Your current product variant**

Size code	16
Seal	PP
Relubrication facility	AS

Technical data

	6	Ball rows
≈m	0,15 kg	Weight

Main Dimensions & Performance Data

F _w	16 mm	Diameter of ball complement
H	35 mm	Height
L	37 mm	Length
B	53 mm	Width
C _{max}	1.430 N	Load capacity dyn.
C _{0 max}	1.550 N	Load capacity stat.



Mounting dimensions

J _B	40 mm	
Tol J _B	+ 0,15 mm	Upper tolerance
Tol J _B	- 0,15 mm	Lower tolerance
B ₂	10,1 mm	
A ₅	26,5 mm	
Tol A ₅	+ 0,01 mm	Upper tolerance
Tol A ₅	- 0,01 mm	Lower tolerance
J _L	26 mm	Distance
Tol J _L	+ 0,15 mm	Upper tolerance
Tol J _L	- 0,15 mm	Lower tolerance
H ₂	22 mm	Center height
Tol H ₂	+ 0,008 mm	Upper tolerance
Tol H ₂	- 0,016 mm	Lower tolerance
H ₅	7,5 mm	
T ₅	13 mm	
H ₆	21 mm	
G ₂	M6	
N ₁	5,3 mm	
N ₄	1,6x3,35	
N ₃	10 mm	
K ₅	M5	
K ₈	NIP4MZ	Lubrication nipple
α	68 °	Angle