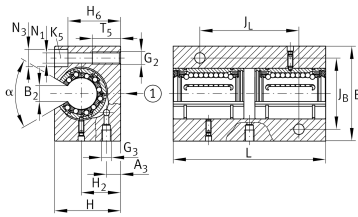
**KTBO12-PP-AS** [↗](#)

## Linear Ball Bearing and Housing Unit

Linear ball bearing and housing unit; open design, sealed, greased, with relubrication facility; corrosion-resistant design possible

## Technical information



## Your current product variant

Size code	12
Seal	PP
Relubrication facility	AS

## Main Dimensions &amp; Performance Data

F <sub>W</sub>	12 mm	Diameter of ball complement
H	30 mm	Height
L	76 mm	Length
B	42 mm	Width
C	980 N	Load capacity dyn. C
C <sub>0</sub>	890 N	Load capacity stat. C <sub>0</sub>
≈m	0,26 kg	Weight



### Mounting dimensions

J <sub>B</sub>	30 mm	
Tol J <sub>B</sub>	+ 0,15 mm	Upper tolerance
Tol J <sub>B</sub>	- 0,15 mm	Lower tolerance
B <sub>2</sub>	7,7 mm	
J <sub>L</sub>	40 mm	
Tol J <sub>L</sub>	+ 0,15 mm	Upper tolerance
Tol J <sub>L</sub>	- 0,15 mm	Lower tolerance
H <sub>2</sub>	18 mm	Center Height
Tol H <sub>2</sub>	+ 0,015 mm	Upper tolerance
Tol H <sub>2</sub>	- 0,015 mm	Lower tolerance
A <sub>3</sub>	6 mm	
T <sub>5</sub>	13 mm	
H <sub>6</sub>	25 mm	
N <sub>1</sub>	5,3 mm	
N <sub>3</sub>	10 mm	
G <sub>2</sub>	M6	Thread size
G <sub>3</sub>	M6	Thread size
α	78 °	Angle
K <sub>5</sub>	M5	Screw DIN 6912