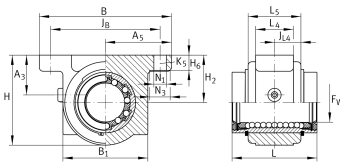
**KGB25-PP-AS**

## Linear Ball Bearing and Housing Unit

Linear ball bearing and housing unit; sealed, greased, with relubrication facility; corrosion-resistant design possible

## Technical information



## Your current product variant

Size code	25
Seal	PP
Relubrication	AS

## Technical data

	6	Ball rows
≈m	0,55 kg	Weight

## Main Dimensions &amp; Performance Data

F <sub>W</sub>	25 mm	Diameter of ball complement
Tol F <sub>W</sub>	+ 0,011 mm	Upper tolerance
Tol F <sub>W</sub>	- 0,001 mm	Lower tolerance
H	57,5 mm	Height
L	58 mm	Length
Tol L	h12	Tolerance
B	80 mm	Width
C	2.800 N	Load capacity dyn.
C <sub>0</sub>	2.220 N	Load capacity stat.



### Mounting dimensions

J <sub>B</sub>	68 mm	
Tol J <sub>B</sub>	+ 0,15 mm	Upper tolerance
Tol J <sub>B</sub>	- 0,15 mm	Lower tolerance
B <sub>1</sub>	55 mm	
A <sub>5</sub>	40 mm	
Tol A <sub>5</sub>	+ 0,02 mm	Upper tolerance
Tol A <sub>5</sub>	- 0,02 mm	Lower tolerance
L <sub>4</sub>	28 mm	
L <sub>5</sub>	40 mm	Length of Shaft Support Block without drive System
J L <sub>4</sub>	20 mm	Distance
H <sub>2</sub>	30 mm	Center height
Tol H <sub>2</sub>	+ 0,015 mm	Upper tolerance
Tol H <sub>2</sub>	- 0,015 mm	Lower tolerance
A <sub>3</sub>	23 mm	
H <sub>6</sub>	10 mm	
N <sub>1</sub>	6,6 mm	
N <sub>3</sub>	11 mm	
K <sub>5</sub>	M6	
K <sub>8</sub>	NIPA1	Lubrication nipple