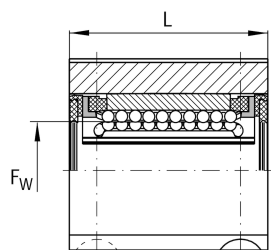
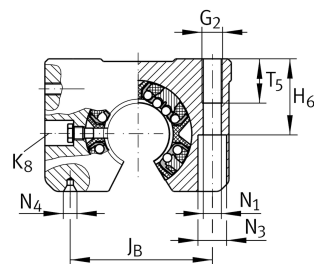
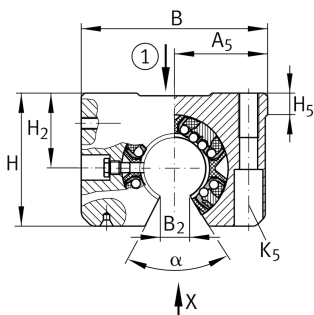


**KGSNOS25-PP-AS**

Linear Ball Bearing and Housing Unit

Linear ball bearing and housing unit; Heavy duty range, With segment cutout, with slot, sealed, greased, with relubrication facility

Technical information

**Your current product variant**

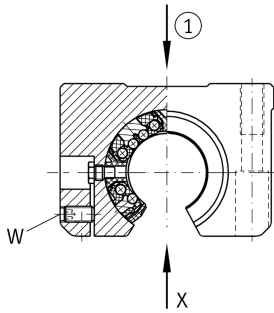
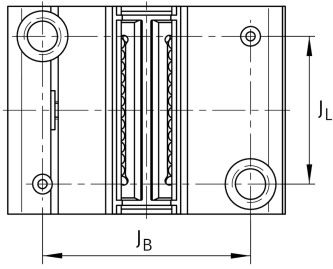
Size code	25
Seal	PP
Relubrication facility	AS

Technical data

	6	Ball rows
≈m	0,52 kg	Weight

Main Dimensions & Performance Data

F _w	25 mm	Diameter of ball complement
H	51 mm	Height
L	58 mm	Length
B	78 mm	Width
C _{max}	3.950 N	Load capacity dyn.
C _{0 max}	4.300 N	Load capacity stat.

**Mounting dimensions**

J_B	60 mm	
Tol J_B	+ 0,15 mm	Upper tolerance
Tol J_B	- 0,15 mm	Lower tolerance
A_5	39 mm	
Tol A_5	+ 0,01 mm	Upper tolerance
Tol A_5	- 0,01 mm	Lower tolerance
B_2	12,5 mm	
J_L	40 mm	Distance
Tol J_L	+ 0,15 mm	Upper tolerance
Tol J_L	- 0,15 mm	Lower tolerance
H_2	30 mm	Center height
Tol H_2	+ 0,008 mm	Upper tolerance
Tol H_2	- 0,016 mm	Lower tolerance
H_5	8,8 mm	
T_5	22 mm	
H_6	29 mm	
G_2	M10	
N_1	8,4 mm	
N_4	2.5x5.3	
N_3	15 mm	
K_5	M8	
K_8	NIP5MZ	Lubrication nipple
W	3 mm	Width across flats
α	57 °	Angle