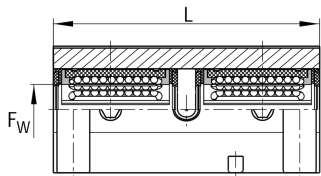
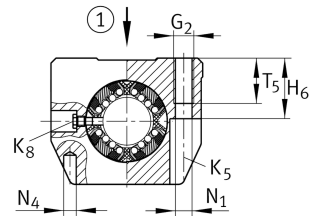
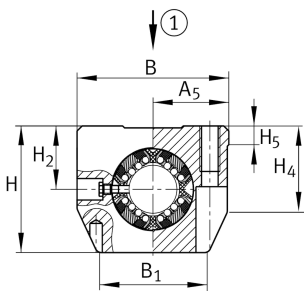


KTSS12-PP-AS [↗](#)

Linear Ball Bearing and Housing Unit

Linear ball bearing and housing unit; adjustable clearance, with self-aligning linear ball bearing, contact seals on both sides

Technical information



Your current product variant

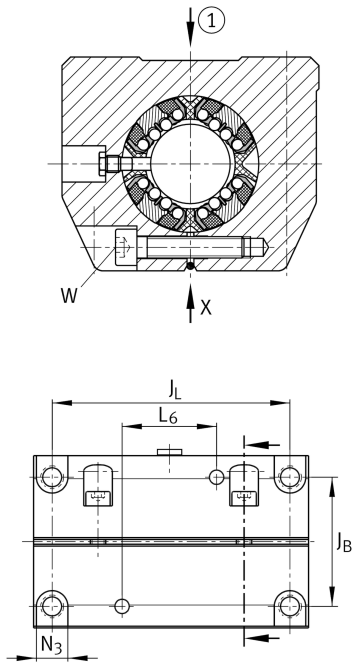
Size code	12
Seal	PP
Relubrication	AS

Technical data

	8	Ball rows
≈m	0,21 kg	Weight

Main Dimensions & Performance Data

F _w	12 mm	Diameter of ball complement
H	35 mm	Height
L	70 mm	Length
B	43 mm	Width
C _{max}	1.460 N	Load capacity dyn.
C _{0 max}	2.100 N	Load capacity stat.



Mounting dimensions

J_B	32 mm	
Tol J_B	+ 0,15 mm	Upper tolerance
Tol J_B	- 0,15 mm	Lower tolerance
B_1	34 mm	
A_5	21,5 mm	
Tol A_5	+ 0,01 mm	Upper tolerance
Tol A_5	- 0,01 mm	Lower tolerance
J_L	56 mm	Distance
Tol J_L	+ 0,15 mm	Upper tolerance
Tol J_L	- 0,15 mm	Lower tolerance
L_6	24 mm	Distance
H_2	18 mm	Center height
Tol H_2	+ 0,008 mm	Upper tolerance
Tol H_2	- 0,016 mm	Lower tolerance
H_4	26,6 mm	
H_5	5,4 mm	
T_5	11 mm	
H_6	16,5 mm	
G_2	M5	
N_1	4,3 mm	
N_4	4 mm	
N_3	8 mm	
K_5	M4	
K_8	NIP4MZ	Lubrication nipple
W	2,5 mm	Width across flats