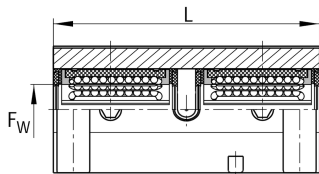
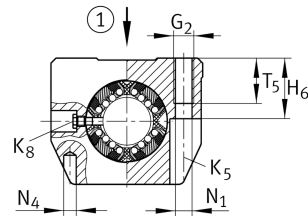
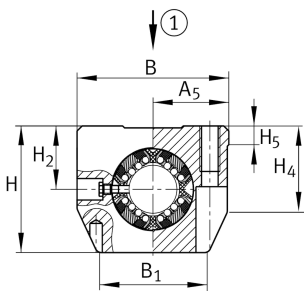


KTSS25-PP-AS [↗](#)

Linear Ball Bearing and Housing Unit

Linear ball bearing and housing unit; adjustable clearance, with self-aligning linear ball bearing, contact seals on both sides

Technical information



Your current product variant

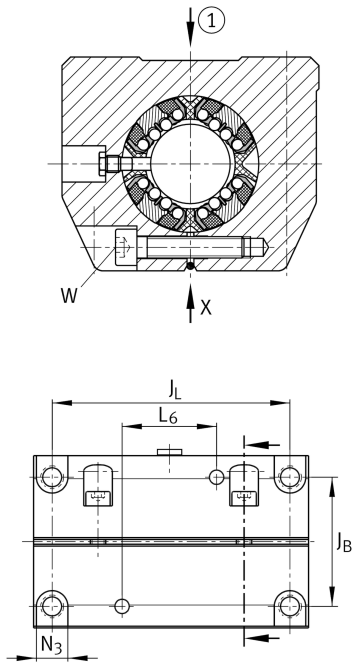
| | |
|------------------------|----|
| Size code | 25 |
| Seal | PP |
| Relubrication facility | AS |

Technical data

| | | |
|----|---------|-----------|
| | 8 | Ball rows |
| ≈m | 1,15 kg | Weight |

Main Dimensions & Performance Data

| | | |
|--------------------|---------|-----------------------------|
| F _w | 25 mm | Diameter of ball complement |
| H | 60 mm | Height |
| L | 122 mm | Length |
| B | 78 mm | Width |
| C _{max} | 6.400 N | Load capacity dyn. |
| C _{0 max} | 8.600 N | Load capacity stat. |



Mounting dimensions

| | | |
|--------------------|------------|--------------------|
| J _B | 60 mm | |
| Tol J _B | + 0,15 mm | Upper tolerance |
| Tol J _B | - 0,15 mm | Lower tolerance |
| B ₁ | 59,4 mm | |
| A ₅ | 39 mm | |
| Tol A ₅ | + 0,01 mm | Upper tolerance |
| Tol A ₅ | - 0,01 mm | Lower tolerance |
| J _L | 94 mm | Distance |
| Tol J _L | + 0,15 mm | Upper tolerance |
| Tol J _L | - 0,15 mm | Lower tolerance |
| L ₆ | 44 mm | Distance |
| H ₂ | 30 mm | Center height |
| Tol H ₂ | + 0,008 mm | Upper tolerance |
| Tol H ₂ | - 0,016 mm | Lower tolerance |
| H ₄ | 41,5 mm | |
| H ₅ | 8,3 mm | |
| T ₅ | 22 mm | |
| H ₆ | 29 mm | |
| G ₂ | M10 | |
| N ₁ | 8,4 mm | |
| N ₄ | 6 mm | |
| N ₃ | 15 mm | |
| K ₅ | M8 | |
| K ₈ | NIP5MZ | Lubrication nipple |
| W | 5 mm | Width across flats |