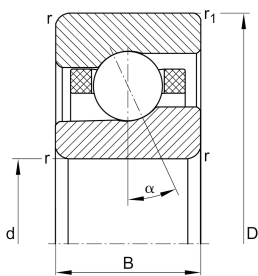
**FAG****HCM7006-C-T-P4S-UL-XL**

High speed spindle bearing

High speed spindle bearing HCM70.-C, adjusted, in pairs or sets, contact angle $\alpha = 17^\circ$, with ceramic balls, restricted tolerances

Technical information



Your current product variant

Contact angle	Contact angle 17°	Contact angle 17°
Type of seal	Without	Not sealed
Cage	T	Laminated fabric cage
Tolerance class	P4S	Tolerance class P4S, FAG standard better than P4 to DIN 620
Arrangement bearing set	U	Single bearing
Preload	L	Preload light

Main Dimensions & Performance Data

d	30 mm	Bore diameter
D	55 mm	Outside diameter
B	13 mm	Width
C_r	8.900 N	Basic dynamic load rating, radial
C_{0r}	3.900 N	Basic static load rating, radial
C_{ur}	315 N	Fatigue load limit, radial
n_G Grease	48.000 1/min	Limiting speed for grease lubrication
n_G Oil	70.000 1/min	Limiting speed for oil lubrication
$\approx m$	108,3 g	Weight



Mounting dimensions

d_a	36 mm	Diameter shaft shoulder
d_a	h12	Diameter shaft shoulder clearance
D_a	49 mm	Shoulder diameter outer ring
D_a	H12	Shoulder diameter outer ring clearance
$r_{a \max}$	1 mm	Maximum recess radius
$r_{a1 \max}$	0,3 mm	Maximum recess radius
$E_{tk \min}$	39,2 mm	Minimum diameter injection pitch
$E_{tk \max}$	40,9 mm	Maximum diameter injection pitch
$E_{tk1 \min}$	37,1 mm	Minimum diameter injection pitch
$E_{tk1 \max}$	40,9 mm	Maximum diameter injection pitch
a	13 mm	Distance between the apexes of the pressure cones

Dimensions

r_{\min}	1 mm	Minimum chamfer dimension
$r_{1 \min}$	0,6 mm	Minimum chamfer dimension
α	17 °	Contact angle

Temperature range

T_{\min}	-30 °C	Operating temperature min.
T_{\max}	100 °C	Operating temperature max.



Additional information

F_{VL}	30 N	Preload force light
F_{VM}	79 N	Preload force medium
F_{VH}	166 N	Preload force heavy
K_{aEL}	87 N	Lift-off force light
K_{aEM}	235 N	Lift-off force medium
K_{aEH}	507 N	Lift-off force heavy
c_{aL}	29 N/ μm	Axial rigidity light
c_{aM}	42 N/ μm	Axial rigidity medium
c_{aH}	56 N/ μm	Axial rigidity heavy

Characteristics

-  Radial load
-  Axial load in one direction
-  Grease Lubrication
-  Oil Lubrication
-  Not sealed