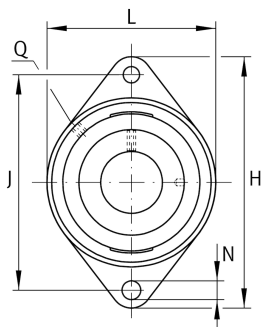


**RCJTZL25**

Flanged housing unit

Flanged housing unit RCJTZL

Technical information

**Your current product variant**

Material	GG	Grey cast iron
----------	----	----------------

Main Dimensions & Performance Data

d	25 mm	Bore diameter
L	70 mm	Flange width
H	124 mm	Height flange
U	39,2 mm	Total height unit
C _r	14.900 N	Basic dynamic load rating, radial
C _{0r}	7.800 N	Basic static load rating, radial
C _{ur}	395 N	Fatigue load limit, radial
≈m	0,72 kg	Weight

Mounting dimensions

J	99 mm	Distance fixing bore
N	11,5 mm	Fixing bore
T ₁	3,5 mm	Height spigot
Z	60 mm	Diameter spigot
	h8	Diameter spigot clearance
n	2	Number of screwing holes



Dimensions

A	28,5 mm	Height housing
A ₁	12 mm	Thickness of flange
A ₂	19 mm	Distance raceway
B	34,9 mm	Width
V	70 mm	Shoulder diameter housing
Q	M6	Connection thread for lubrication

Additional information

GEHCJTZ05-GG	Housing
GLE25-XL-KRR-B	Bearing designation

Temperature range

T _{min}	-40 °C	Operating temperature min.
T _{max}	180 °C	Operating temperature max.