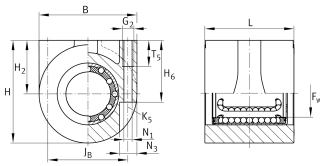
**KGHA25-PP**

Linear Ball Bearing and Housing Unit

Linear Ball Bearing and Housing Units,
Sealed, Greased, Corrosion-resistant Design
Possible

Technical information

**Your current product variant**

| | |
|-----------|-----------|
| Size code | 25 |
| Seal | PP Sealed |

Main Dimensions & Performance Data

| | | |
|----------------|----------|---------------------|
| H | 57,5 mm | Height |
| B | 55 mm | Width |
| L | 49 mm | Length |
| | + 0,5 mm | Tolerance |
| C | 2.280 N | Dynamic load rating |
| C ₀ | 1.670 N | Static load rating |
| ≈m | 0,496 kg | Weight |

Mounting dimensions

| | | |
|--------------------|----------|-----------|
| H ₆ | 35 mm | |
| T ₅ | 15 mm | |
| J _B | 46 mm | |
| Tol J _B | ± 0,1 mm | Tolerance |
| G ₂ | M6 | |
| N ₁ | 5,1 mm | |
| N ₃ | 8,1 mm | |
| K ₅ | M4 | |



View product details on medias

24.04.2026, 17:04:18 UTC

SCHAEFFLER

Dimensions

| | | |
|--------------------|------------|-----------------------------|
| F _w | 25 mm | Diameter of ball complement |
| H ₂ | 30 mm | Axis center |
| Tol H ₂ | ± 0,015 mm | Tolerance |