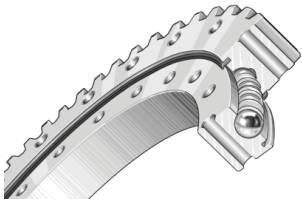




View product details on medias

14.05.2026, 20:19:28 UTC

SCHAEFFLER

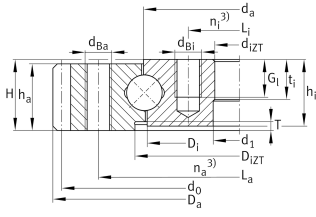


VA160302-N [↗](#)

Slewing ring, 4 point contact bearing, external gear teeth

Slewing ring, 4 point contact bearing, external gear teeth

Technical information

**Your current product variant**

Gearing	N	Normalized gear teeth on bearing ring
---------	---	---------------------------------------

Main Dimensions & Performance Data

d_i	240 mm	Bore Diameter
	0,5 mm	Bore diameter upper tolerance
	-0,5 mm	Bore diameter lower tolerance
d_{iZT}	238 mm	Diameter centring inner ring
	0 mm	Diameter centring inner ring upper tolerance
	-0,07 mm	Diameter centring inner ring lower tolerance
H	32 mm	Height
D_a	384 mm	Outside Diameter
D_{iZT}	310 mm	Diameter centring outer ring
	0 mm	Diameter centring outer ring upper tolerance
	-0,08 mm	Diameter centring outer ring lower tolerance
T	3 mm	Length centering outer ring
t	18 mm	Length centering inner ring
h_a	30 mm	Width outer ring
h_i	30 mm	Height of inner ring
	0,04 mm	Normal radial clearance min.
	0,16 mm	Normal radial clearance max.
	0,07 mm	Normal axial clearance min.
	0,26 mm	Normal axial clearance max.
$\approx m$	13,7 kg	Weight



Dimensions

d_a	302,3 mm	Outside diameter inner ring
n_i	20	Number of fixing holes in inner ring
L_i	262 mm	Pitchcircle diameter fixing holes inner ring
n_a	20	Number of fixing holes in outer ring
L_a	343 mm	Pitchcircle diameter fixing holes outer ring
d_{Ba}	M12	Tread fixing bore
G_I	18 mm	Thread depth fixing hole
$F_{r\ zul}$	82.600 N	Max. radial load fixing screws (friction locking)
d_0	376 mm	Pitch circle diameter gearing
m	4 mm	Modul of gearing
z	94	Number of teeth
b	30 mm	Width gearing
$F_{z\ norm}$	11.000 N	Max. tooth force root fatigue strenght (at a shock factor of 1,2)
$F_{z\ max}$	16.100 N	Max. tooth force against tooth fracture (at a shock factor of 1,35)

Temperature range

T_{min}	-25 °C	Operating temperature min.
T_{max}	80 °C	Operating temperature max.

Calculation factors

C_a	136.000 N	Basic dynamic load rating, axial
C_{0a}	590.000 N	Basic static load rating, axial
C_r	123.000 N	Basic dynamic load rating, radial
C_{0r}	270.000 N	Basic static load rating, radial



Characteristics



Radial load



Axial load in one direction



Axial load in two directions



Moments about all axes



Grease Lubrication



Large bearing