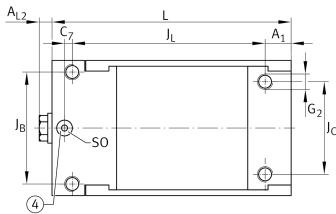
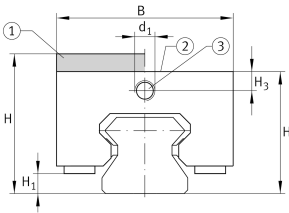
**BKE.TSX55-D**

Braking/clamping element

Braking and clamping element BKE.TSX..-D, hydraulic connector on end face, for linear recirculating roller bearing and guideway assembly

Technical information

**Your current product variant**

Size code	55
Version	D

Main Dimensions & Performance Data

H	70 mm	Height system
	without	Adapter plate
B	99 mm	Width of braking and clamping element
L	170 mm	Length braking and clamping element
	5.100 N	Clamping force
≈m	6,74 kg	Weight

Dimensions

J _B	80 mm	Hole pattern
J _C	72 mm	Hole pattern
A ₁	18 mm	Distance
J _L	138 mm	Hole pattern
H ₁	17 mm	Space (system)
H ₃	11,75 mm	Mounting dimension
A _{L2}	6 mm	Distance
d ₁	M10x1	Size thread
G ₂	M12	Size thread above for DIN ISO 4762-12.9
M _A	144 Nm	Tightening torque above