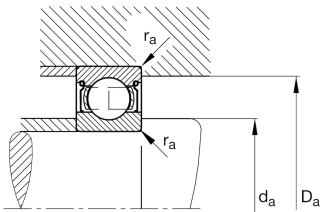
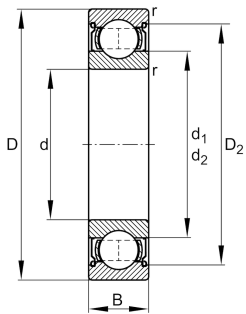


**FAG****6309-2Z-L038-C3**

Deep groove ball bearing

Deep groove ball bearing 63...2Z, single row, shields, steel sheet metal cage

## Technical information



## Your current product variant

Sealing	2Z	Non-contact shield on both sides
Cage	JN	Steel sheet metal
Tolerance class	PN	Normal (ISO 492:2023)
Dimensional / heat stabilization	S0	Rings dimensional stabilized up to 150°
Lubricant	L038	Grease (L038/customer specific)
Radial internal clearance	C3 (Group 3)	Internal clearance larger than CN
Bore type	Z	Cylindrical

## Main Dimensions &amp; Performance Data

d	45 mm	Bore diameter
D	100 mm	Outside diameter
B	25 mm	Width
C <sub>r</sub>	56.000 N	Basic dynamic load rating, radial
C <sub>0r</sub>	31.500 N	Basic static load rating, radial
C <sub>ur</sub>	2.240 N	Fatigue load limit, radial
n <sub>G</sub>	8.100 1/min	Limiting speed
n <sub>gr</sub>	8.200 1/min	Reference speed
≈m	0,88 kg	Weight



### Mounting dimensions

$d_{a \min}$	54 mm	Minimum diameter shaft shoulder
$D_{a \max}$	91 mm	Maximum diameter of housing shoulder
$r_{a \max}$	1,5 mm	Maximum fillet radius

### Dimensions

$r_{\min}$	1,5 mm	Minimum chamfer dimension
$D_1$	83,3 mm	Shoulder diameter outer ring
$D_2$	85,64 mm	Caliber diameter outer ring
$d_1$	62 mm	Shoulder diameter inner ring

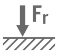





### Temperature range

$T_{\min}$	-20 °C	Operating temperature min.
$T_{\max}$	150 °C	Operating temperature max.

### Calculation factors

$f_0$	12,9	Calculation factor
-------	------	--------------------

### Characteristics

	Radial load
	Axial load in one direction
	Axial load in two directions
	Lifetime lubrication, freedom from maintenance
	Grease Lubrication
	Sealed on both sides