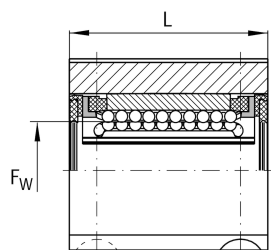
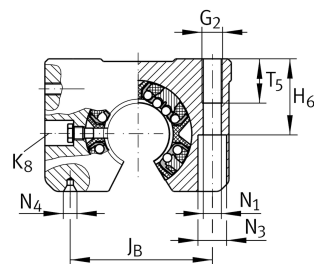
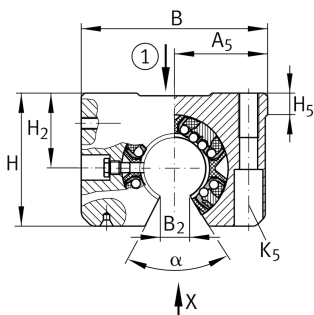


**KGSNOS20-PP-AS**

## Linear Ball Bearing and Housing Unit

Linear ball bearing and housing unit; Heavy duty range, With segment cutout, with slot, sealed, greased, with relubrication facility

## Technical information

**Your current product variant**

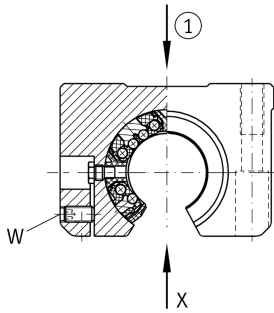
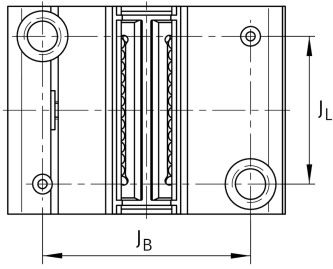
Size code	20
Seal	PP
Relubrication facility	AS

**Technical data**

	6	Ball rows
≈m	0,2 kg	Weight

**Main Dimensions & Performance Data**

F <sub>w</sub>	20 mm	Diameter of ball complement
H	42 mm	Height
L	45 mm	Length
B	60 mm	Width
C <sub>max</sub>	2.200 N	Load capacity dyn.
C <sub>0 max</sub>	2.310 N	Load capacity stat.



### Mounting dimensions

$J_B$	45 mm	
Tol $J_B$	+ 0,15 mm	Upper tolerance
Tol $J_B$	- 0,15 mm	Lower tolerance
$A_5$	30 mm	
Tol $A_5$	+ 0,01 mm	Upper tolerance
Tol $A_5$	- 0,01 mm	Lower tolerance
$B_2$	10 mm	
$J_L$	32 mm	Distance
Tol $J_L$	+ 0,15 mm	Upper tolerance
Tol $J_L$	- 0,15 mm	Lower tolerance
$H_2$	25 mm	Center height
Tol $H_2$	+ 0,008 mm	Upper tolerance
Tol $H_2$	- 0,016 mm	Lower tolerance
$H_5$	8 mm	
$T_5$	18 mm	
$H_6$	24 mm	
$G_2$	M8	
$N_1$	6,6 mm	
$N_4$	2x4.25	
$N_3$	11 mm	
$K_5$	M6	
$K_8$	NIP4MZ	Lubrication nipple
$W$	2,5 mm	Width across flats
$\alpha$	55 °	Angle