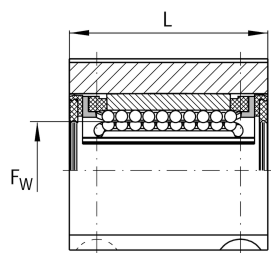
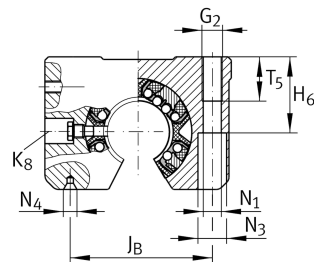
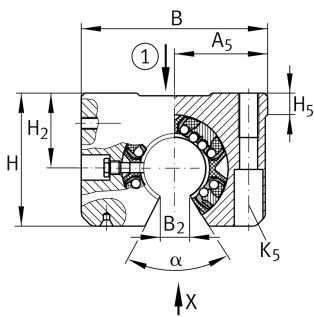
**KGSNOS40-PP-AS**

Linear Ball Bearing and Housing Unit

Linear ball bearing and housing unit; Heavy duty range, With segment cutout, with slot, sealed, greased, with relubrication facility

Technical information

**Your current product variant**

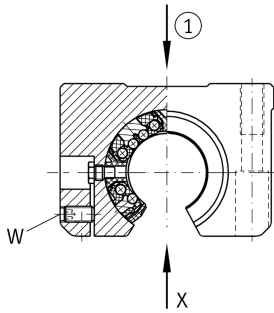
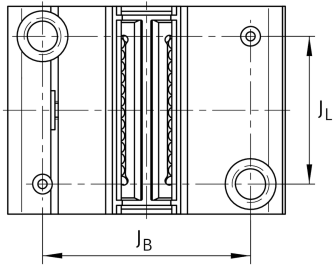
Size code	25
Seal	PP
Relubrication facility	AS

Technical data

	6	Ball rows
≈m	1,4 kg	Weight

Main Dimensions & Performance Data

F _w	40 mm	Diameter of ball complement
H	77 mm	Height
L	80 mm	Length
B	108 mm	Width
C _{max}	10.200 N	Load capacity dyn.
C _{0 max}	9.600 N	Load capacity stat.



Mounting dimensions

J_B	86 mm	
Tol J_B	+ 0,15 mm	Upper tolerance
Tol J_B	- 0,15 mm	Lower tolerance
A_5	54 mm	
Tol A_5	+ 0,01 mm	Upper tolerance
Tol A_5	- 0,01 mm	Lower tolerance
B_2	18,2 mm	
J_L	58 mm	Distance
Tol J_L	+ 0,15 mm	Upper tolerance
Tol J_L	- 0,15 mm	Lower tolerance
H_2	45 mm	Center height
Tol H_2	+ 0,008 mm	Upper tolerance
Tol H_2	- 0,016 mm	Lower tolerance
H_5	12,4 mm	
T_5	26 mm	
H_6	44 mm	
G_2	M12	
N_1	10,5 mm	
N_4	3.15x6.7	
N_3	18 mm	
K_5	M10	
K_8	NIP5MZ	Lubrication nipple
W	4 mm	Width across flats
α	56 °	Angle