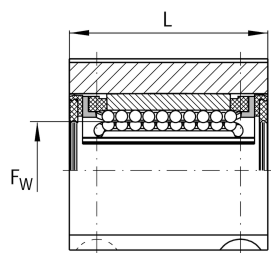
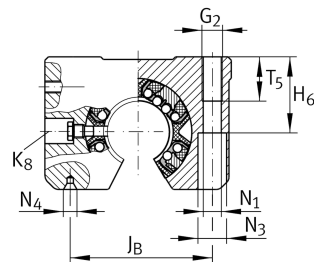
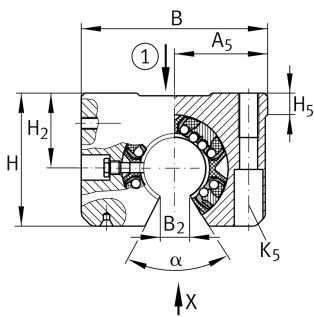
**KGSNOS50-PP-AS**

## Linear Ball Bearing and Housing Unit

Linear ball bearing and housing unit; Heavy duty range, With segment cutout, with slot, sealed, greased, with relubrication facility

## Technical information

**Your current product variant**

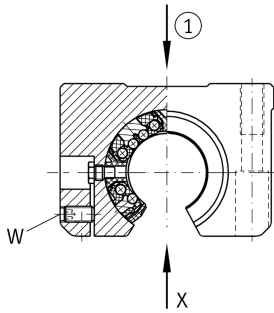
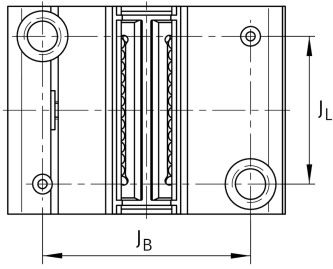
Size code	50
Seal	PP
Relubrication facility	AS

**Technical data**

	6	Ball rows
≈m	2,67 kg	Weight

**Main Dimensions & Performance Data**

F <sub>w</sub>	50 mm	Diameter of ball complement
H	88 mm	Height
L	100 mm	Length
B	132 mm	Width
C <sub>max</sub>	15.100 N	Load capacity dyn.
C <sub>0 max</sub>	13.900 N	Load capacity stat.



### Mounting dimensions

$J_B$	108 mm	
Tol $J_B$	+ 0,15 mm	Upper tolerance
Tol $J_B$	- 0,15 mm	Lower tolerance
$A_5$	66 mm	
Tol $A_5$	+ 0,01 mm	Upper tolerance
Tol $A_5$	- 0,01 mm	Lower tolerance
$B_2$	22,7 mm	
$J_L$	50 mm	Distance
Tol $J_L$	+ 0,15 mm	Upper tolerance
Tol $J_L$	- 0,15 mm	Lower tolerance
$H_2$	50 mm	Center height
Tol $H_2$	+ 0,008 mm	Upper tolerance
Tol $H_2$	- 0,016 mm	Lower tolerance
$H_5$	11,1 mm	
$T_5$	35 mm	
$H_6$	49 mm	
$G_2$	M16	
$N_1$	13,5 mm	
$N_4$	4x8.5	
$N_3$	20 mm	
$K_5$	M12	
$K_8$	NIP5MZ	Lubrication nipple
$W$	5 mm	Width across flats
$\alpha$	54 °	Angle