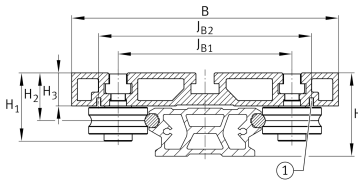
**LFCL86**

hollow section carriage

hollow section carriage, clearance-free

Technical information

**Your current product variant**

Size code 86

Main Dimensions & Performance DataH₁ 48,4 mm

B 190 mm

L 235 mm

≈m 2,2 kg Weight

Mounting dimensionsG₄ M10x14

H 59 mm Total height of carriage and rail at LFS, -C, -CE, -CEE, -E, -EE, -N, -NZZ

H₂ 33,9 mmH₂ Tol 0,3H₂ Tol 0H₃ 23,4 mmJ_B 124 mmJ_{B1} 124 mmJ_{B2} 151,5 mmJ_{L1} 155 mmJ_{L3} max 119 mmJ_{L3} min 18 mm



Main dimensions

C_y	17.800 N	Basic dynamic load rating in y-direction
C_{0y}	8.850 N	Basic static load rating in y-direction
C_z	28.400 N	Basic dynamic load rating in z-direction
C_{0z}	15.500 N	Basic static load rating in z-direction
M_{0x}	335 Nm	Static moment about X-axis
M_{0y}	1.190 Nm	Static moment about Y-axis
M_{0z}	680 Nm	Static moment about Z-axis

Related products

LFR	LFR5301-10-2Z	Used track roller
LFS	LFS86	Guide rail