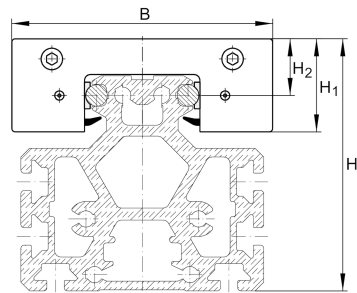
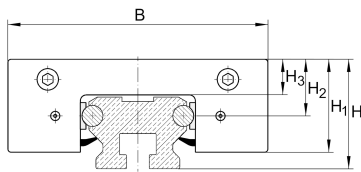


## LFKL32-SF

### Carriage

compact carriage, clearance-free; corrosion-resistant design possible

## Technical information

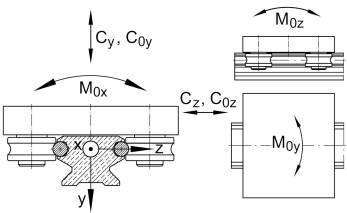
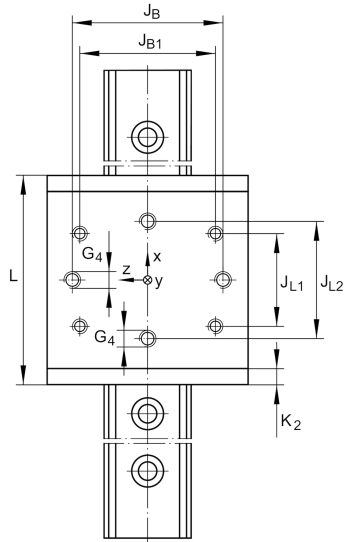
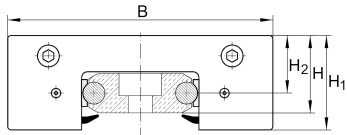


### Your current product variant

Size code	32	
Setting	SF	Clearance-free

### Main Dimensions & Performance Data

H <sub>1</sub>	32 mm	
B	86 mm	
L	1.120 mm	
≈m	0,55 kg	Weight



### Mounting dimensions

G 4	M8	
H	35,5 mm	Total height of carriage and rail at LFS, -C, -CE, -CEE, -E, -EE, -N, -NZZ
H	25,5 mm	Total height of carriage and rail at LFS.-F, -FE
H	81,5 mm	Total height of carriage and rail at LFS.-M
H 2	20,5 mm	
H 2 Tol	0,3	
H 2 Tol	0	
H 3	14 mm	
J B	59 mm	
J B Tol	0,2	
J B Tol	-0,2	
J B1	54 mm	
J L1	60 mm	
J L2	70 mm	
J L2 Tol	0,2	
J L2 Tol	-0,2	
K 2	7 mm	



### Main dimensions

$M_A$	15 Nm	Tightening torque (standard version)
$M_A$	12 Nm	Tightening torque (corrosion-resistant version)
$C_y$	4.100 N	Basic dynamic load rating in y-direction
$C_{0y}$	2.400 N	Basic static load rating in y-direction
$C_z$	6.600 N	Basic dynamic load rating in z-direction
$C_{0z}$	4.200 N	Basic static load rating in z-direction
$M_{0x}$	30 Nm	Static moment about X-axis
$M_{0y}$	130 Nm	Static moment about Y-axis
$M_{0z}$	70 Nm	Static moment about Z-axis

### Related products

LFR	LFR50/8-6-2Z	Used track roller
LFS	LFS32	Guide rail