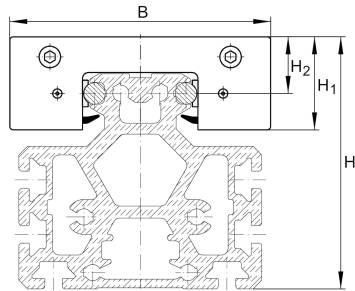
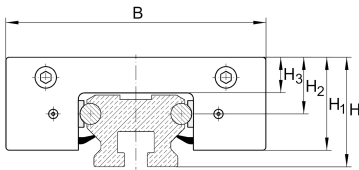


### LFKL52-SF [↗](#)

#### Carriage

compact carriage, clearance-free; corrosion-resistant design possible

## Technical information

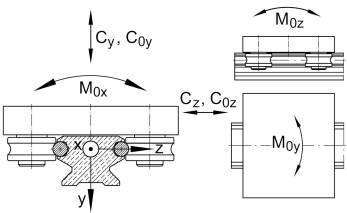
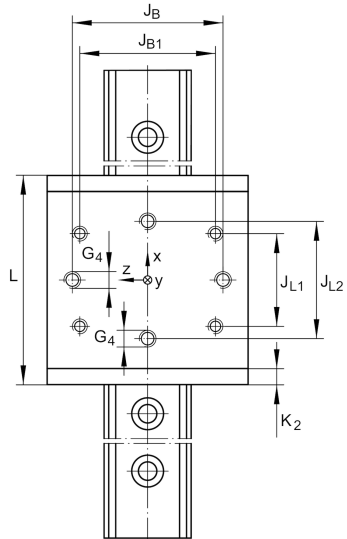
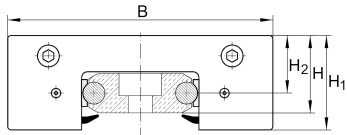


### Your current product variant

Size code	52	
Setting	SF	Clearance-free

### Main Dimensions & Performance Data

H <sub>1</sub>	46 mm	
B	130 mm	
L	136 mm	
≈m	1,45 kg	Weight



## Mounting dimensions

G 4	M10	
H	54,3 mm	Total height of carriage and rail at LFS, -C, -CE, -CEE, -E, -EE, -N, -NZZ
H	38,2 mm	Total height of carriage and rail at LFS.-F, -FE
H	118,9 mm	Total height of carriage and rail at LFS.-M
H 2	29,2 mm	
H 2 Tol	0,3	
H 2 Tol	0	
H 3	19,4 mm	
J B	90 mm	
J B Tol	0,2	
J B Tol	-0,2	
J B1	83 mm	
J L1	60 mm	
J L2	70 mm	
J L2 Tol	0,2	
J L2 Tol	-0,2	
K 2	10 mm	



### Main dimensions

$M_A$	40 Nm	Tightening torque (standard version)
$M_A$	23 Nm	Tightening torque (corrosion-resistant version)
$C_y$	10.000 N	Basic dynamic load rating in y-direction
$C_{0y}$	5.200 N	Basic static load rating in y-direction
$C_z$	16.800 N	Basic dynamic load rating in z-direction
$C_{0z}$	10.000 N	Basic static load rating in z-direction
$M_{0x}$	110 Nm	Static moment about X-axis
$M_{0y}$	290 Nm	Static moment about Y-axis
$M_{0z}$	150 Nm	Static moment about Z-axis

### Related products

LFR	LFR5201-10-2Z	Used track roller
LFS	LFS52	Guide rail