**LFCL25**

hollow section carriage

hollow section carriage, clearance-free

Technical information

Your current product variant

Size code 25

Main Dimensions & Performance Data

H₁ 30,5 mm

B 80 mm

L 110 mm

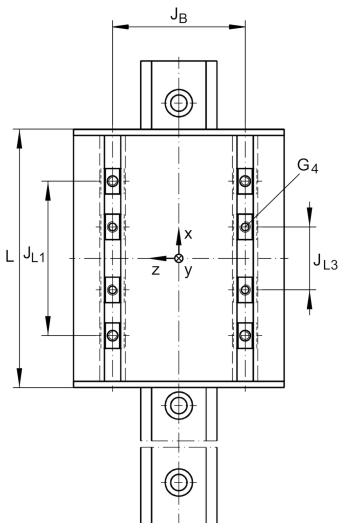
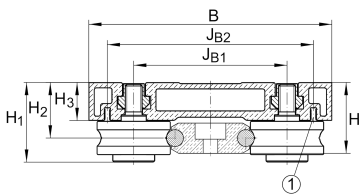
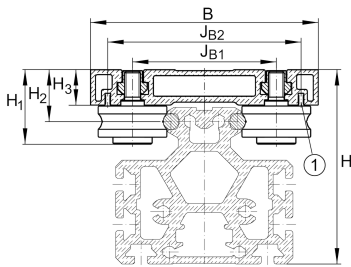
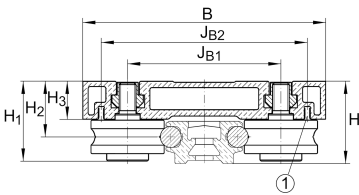
≈m 0,45 kg Weight

Mounting dimensions

G₄ M6x10

H 32,1 mm Total height of carriage and rail at LFS, -C, -CE, -CEE, -E, -EE, -N, -NZZ

H 63,1 mm Total height of carriage and rail at LFS.-M

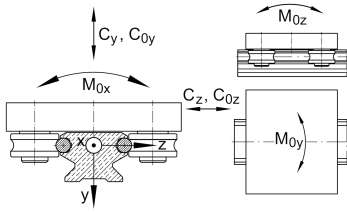
H₂ 21,5 mmH₂ Tol 0,3H₂ Tol 0H₃ 15,4 mmJ_B 47 mmJ_{B1} 47 mmJ_{B2} 69 mmJ_{L1} 58 mmJ_{L3} max 32 mmJ_{L3} min 13 mm



View product details on medias

30.04.2026, 17:14:47 UTC

SCHAEFFLER



Main dimensions

C_y	4.600 N	Basic dynamic load rating in y-direction
C_{0y}	2.400 N	Basic static load rating in y-direction
C_z	7.320 N	Basic dynamic load rating in z-direction
C_{0z}	4.500 N	Basic static load rating in z-direction
M_{0x}	25 Nm	Static moment about X-axis
M_{0y}	120 Nm	Static moment about Y-axis
M_{0z}	65 Nm	Static moment about Z-axis

Related products

LFR	LFR50/8-6-2Z	Used track roller
LFS	LFS25	Guide rail