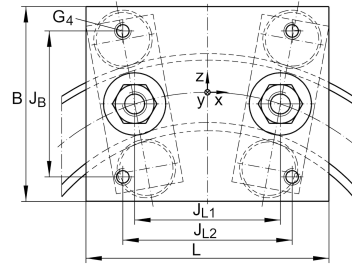
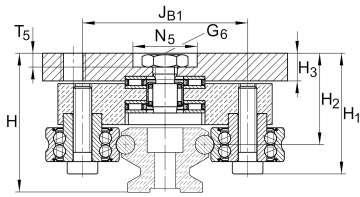


LFDL32-SF

Carriage

bogie carriage; clearance-free

Technical information



Your current product variant

Size code	32
Setting	SF

Main Dimensions & Performance Data

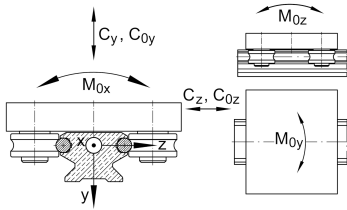
H ₁	37 mm	
B	80 mm	
L	100 mm	
≈m	0,85 kg	Weight



View product details on medias

21.05.2026, 12:43:23 UTC

SCHAEFFLER



Mounting dimensions

G ₄	M8	
G ₆	M8	
H	44,2 mm	Total height of carriage and rail at LFS, -C, -CE, -CEE, -E, -EE, -N, -NZZ
H ₂	29,2 mm	
H _{2 Tol}	0,3	
H _{2 Tol}	0	
H ₃	9 mm	
J _B	60 mm	
J _{B1}	54 mm	
J _{L1}	60 mm	
J _{L2}	70 mm	
N ₅	21 mm	
T ₅	7 mm	

Main dimensions

M _A	15 Nm	Tightening torque (standard version)
C _y	4.100 N	Basic dynamic load rating in y-direction
C _{0y}	2.400 N	Basic static load rating in y-direction
C _z	6.600 N	Basic dynamic load rating in z-direction
C _{0z}	4.200 N	Basic static load rating in z-direction
M _{0x}	30 Nm	Static moment about X-axis
M _{0y}	130 Nm	Static moment about Y-axis
M _{0z}	70 Nm	Static moment about Z-axis

Related products

LFR	LFR50/8-6-2Z	Used track roller
LFS	LFS32	Guide rail