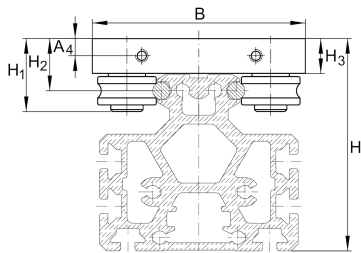
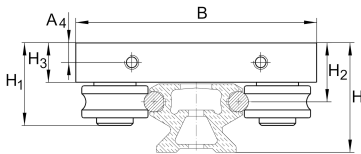


LFL52-SF [↗](#)

Carriage

non-locating bearing carriage, clearance-free

Technical information

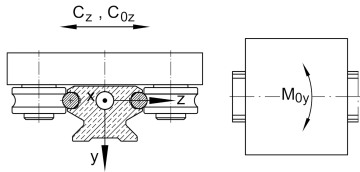
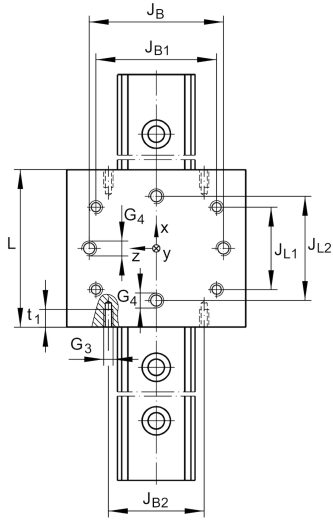
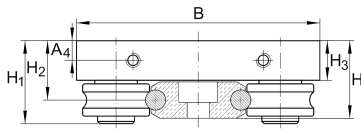


Your current product variant

Size code	52
Setting	SF

Main Dimensions & Performance Data

H ₁	45 mm	
B	120 mm	
L	100 mm	
≈m	1,05 kg	Weight



Mounting dimensions

A 4	9,75 mm	
G 3	M6	
G 4	M10	
H	54,3 mm	Total height of carriage and rail at LFS, -C, -CE, -CEE, -E, -EE, -N, -NZZ
H	38,2 mm	Total height of carriage and rail at LFS.-F, -FE
H	118,9 mm	Total height of carriage and rail at LFS.-M
H 2	29,2 mm	
H 2 Tol	1	
H 2 Tol	-1	
H 3	19,5 mm	
J B	90 mm	
J B Tol	0,2	
J B Tol	-0,2	
J B1	83 mm	
J B2	65 mm	
J L1	60 mm	
J L2	70 mm	
J L2 Tol	0,2	
J L2 Tol	-0,2	
t 1	12 mm	

Main dimensions

C z	17.000 N	Basic dynamic load rating in z-direction
C 0z	19.000 N	Basic static load rating in z-direction
M 0y	550 Nm	Static moment about Y-axis



View product details on medias

26.04.2026, 06:01:50 UTC

SCHAEFFLER

Related products

LFR	LFR2202-10-2RSR- RNA+IR.LFLL52	Used track roller
LFS	LFS52	Guide rail