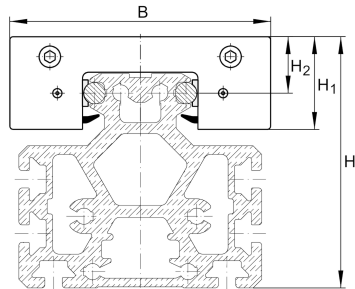
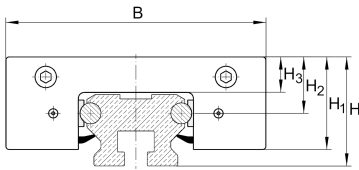


LFKL52-EE-SF

Carriage

compact carriage, wide, long design,
clearance-free; corrosion-resistant design
possible

Technical information

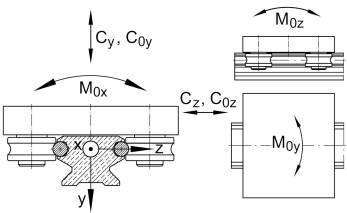
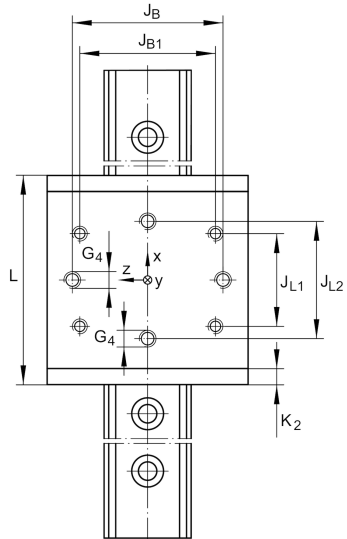
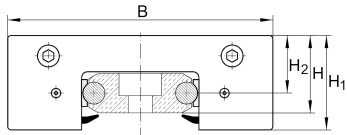


Your current product variant

Size Code	52	
Setting	SF	Clearance-free
Carriage design	EE	Wide, long design

Main Dimensions & Performance Data

H ₁	53,8 mm	
B	155 mm	
L	205 mm	
≈m	4,3 kg	Weight



Mounting dimensions

G 4	M12	
H	60,4 mm	Total height of carriage and rail at LFS, -C, -CE, -CEE, -E, -EE, -N, -NZZ
H	44,3 mm	Total height of carriage and rail at LFS.-F, -FE
H	125 mm	Total height of carriage and rail at LFS.-M
H 2	35,2 mm	
H 2 Tol	0,3	
H 2 Tol	0	
H 3	24 mm	
J B	115 mm	
J B Tol	0,2	
J B Tol	-0,2	
J B1	95,2 mm	
J L1	120 mm	
J L2	140 mm	
J L2 Tol	0,2	
J L2 Tol	-0,2	
K 2	10 mm	



Main dimensions

M_A	70 Nm	Tightening torque (standard version)
M_A	39 Nm	Tightening torque (corrosion-resistant version)
C_y	20.000 N	Basic dynamic load rating in y-direction
C_{0y}	10.000 N	Basic static load rating in y-direction
C_z	32.400 N	Basic dynamic load rating in z-direction
C_{0z}	18.200 N	Basic static load rating in z-direction
M_{0x}	215 Nm	Static moment about X-axis
M_{0y}	1.100 Nm	Static moment about Y-axis
M_{0z}	620 Nm	Static moment about Z-axis

Related products

LFR	LFR5301-10-2Z	Used track roller
LFS	LFS52-EE	Guide rail