

LFDL52-B [↗](#)

Carriage

bogie carriage

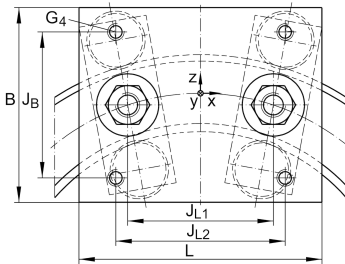
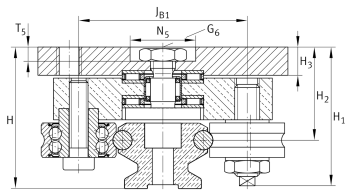
Technical information

Your current product variant

Size code	52
Setting	B

Main Dimensions & Performance Data

H ₁	65,1 mm	
B	120 mm	
L	150 mm	
≈m	2,5 kg	Weight

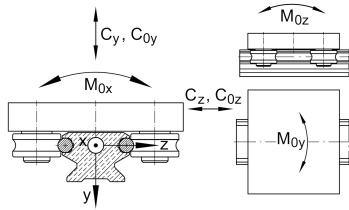




View product details on medias

15.06.2026, 08:26:27 UTC

SCHAEFFLER



Mounting dimensions

G ₄	M10	
G ₆	M10	
H	66,1 mm	Total height of carriage and rail at LFS, -C, -CE, -CEE, -E, -EE, -N, -NZZ
H ₂	41 mm	
H _{2 Tol}	0,3	
H _{2 Tol}	0	
H ₃	11 mm	
J _B	90 mm	
J _{B1}	83 mm	
J _{L1}	76 mm	
J _{L2}	90 mm	
N ₅	26 mm	
T ₅	6 mm	

Main dimensions

M _A	40 Nm	Tightening torque (standard version)
C _y	10.000 N	Basic dynamic load rating in y-direction
C _{0y}	5.200 N	Basic static load rating in y-direction
C _z	16.800 N	Basic dynamic load rating in z-direction
C _{0z}	10.000 N	Basic static load rating in z-direction
M _{0x}	110 Nm	Static moment about X-axis
M _{0y}	380 Nm	Static moment about Y-axis
M _{0z}	200 Nm	Static moment about Z-axis

Related products

LFR	LFR5201-10-2Z	Used track roller
LFS	LFS52	Guide rail