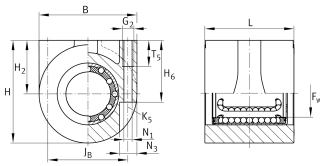
**KGHA20-PP**

## Linear Ball Bearing and Housing Unit

Linear Ball Bearing and Housing Units,  
Sealed, Greased, Corrosion-resistant Design  
Possible

## Technical information



## Your current product variant

Size code	20	
Seal	PP	Sealed

## Main Dimensions &amp; Performance Data

H	48,5 mm	Height
B	47 mm	Width
L	39 mm	Length
	+ 0,5 mm	Tolerance
C	1.110 N	Dynamic load rating
C <sub>0</sub>	790 N	Static load rating
≈m	0,303 kg	Weight

## Mounting dimensions

H <sub>6</sub>	29 mm	
T <sub>5</sub>	15 mm	
J <sub>B</sub>	38 mm	
Tol J <sub>B</sub>	± 0,1 mm	Tolerance
G <sub>2</sub>	M6	
N <sub>1</sub>	5,1 mm	
N <sub>3</sub>	8,1 mm	
K <sub>5</sub>	M4	



View product details on medias

17.05.2026, 17:48:30 UTC

SCHAEFFLER

### Dimensions

F <sub>w</sub>	20 mm	Diameter of ball complement
H <sub>2</sub>	25 mm	Axis center
Tol H <sub>2</sub>	± 0,015 mm	Tolerance