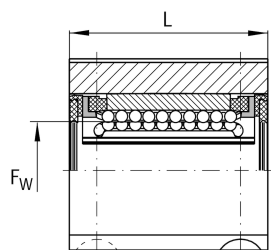
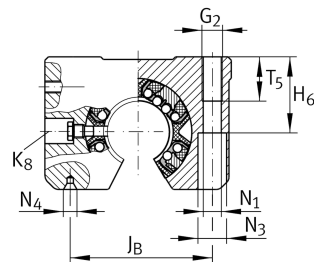
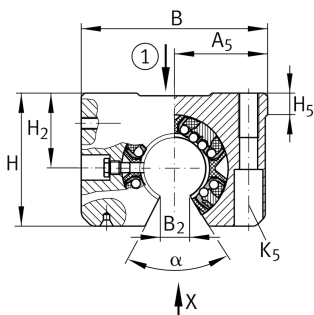


KGSNO25-PP-AS [↗](#)

Linear Ball Bearing and Housing Unit

Linear ball bearing and housing unit; Heavy duty range, With segment cutout, without slot, sealed, greased, with relubrication facility

Technical information



Your current product variant

Size code	25
Seal	PP
Relubrication	AS

Technical data

	6	Ball rows
≈m	0,4 kg	Weight

Main Dimensions & Performance Data

F _w	25 mm	Diameter of ball complement
H	51 mm	Height
L	58 mm	Length
B	78 mm	Width
C _{max}	3.950 N	Load capacity dyn.
C _{0 max}	4.300 N	Load capacity stat.



Mounting dimensions

J _B	60 mm	
Tol J _B	+ 0,15 mm	Upper tolerance
Tol J _B	- 0,15 mm	Lower tolerance
B ₂	12,5 mm	
A ₅	39 mm	
Tol A ₅	+ 0,01 mm	Upper tolerance
Tol A ₅	- 0,01 mm	Lower tolerance
J _L	40 mm	Distance
Tol J _L	+ 0,15 mm	Upper tolerance
Tol J _L	- 0,15 mm	Lower tolerance
H ₂	30 mm	Center height
Tol H ₂	+ 0,008 mm	Upper tolerance
Tol H ₂	- 0,016 mm	Lower tolerance
H ₅	8,8 mm	
T ₅	22 mm	
H ₆	29 mm	
G ₂	M10	
N ₁	8,4 mm	
N ₄	2.5x5.3	
N ₃	15 mm	
K ₅	M8	
K ₈	NIP5MZ	Lubrication nipple
α	57 °	Angle