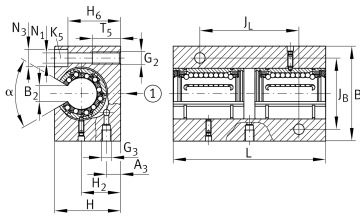
**KTBO16-PP-AS** [↗](#)

Linear Ball Bearing and Housing Unit

Linear ball bearing and housing unit; open design, sealed, greased, with relubrication facility; corrosion-resistant design possible

Technical information



Your current product variant

Size code	12
Seal	PP
Relubrication facility	AS

Main Dimensions & Performance Data

F_W	16 mm	Diameter of ball complement
H	35 mm	Height
L	84 mm	Length
B	50 mm	Width
C	1.290 N	Load capacity dyn. C
C_0	1.240 N	Load capacity stat. C0
$\approx m$	0,35 kg	Weight



Mounting dimensions

J _B	36 mm	
Tol J _B	+ 0,15 mm	Upper tolerance
Tol J _B	- 0,15 mm	Lower tolerance
B ₂	10,1 mm	
J _L	45 mm	
Tol J _L	+ 0,15 mm	Upper tolerance
Tol J _L	- 0,15 mm	Lower tolerance
H ₂	22 mm	Center Height
Tol H ₂	+ 0,015 mm	Upper tolerance
Tol H ₂	- 0,015 mm	Lower tolerance
A ₃	8 mm	
T ₅	13 mm	
H ₆	29,5 mm	
N ₁	5,3 mm	
N ₃	10 mm	
G ₂	M6	Thread size
G ₃	M6	Thread size
α	78 °	Angle
K ₅	M5	Screw DIN 6912