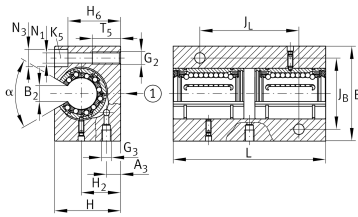


KTBO50-PP-AS [↗](#)

Linear Ball Bearing and Housing Unit

Linear ball bearing and housing unit; open design, sealed, greased, with relubrication facility; corrosion-resistant design possible

Technical information



Your current product variant

Size code	50
Seal	PP
Relubrication facility	AS

Main Dimensions & Performance Data

F _W	50 mm	Diameter of ball complement
H	88 mm	Height
L	224 mm	Length
B	130 mm	Width
C	13.200 N	Load capacity dyn. C
C ₀	14.500 N	Load capacity stat. C0
≈m	5,95 kg	Weight



Mounting dimensions

J _B	100 mm	
Tol J _B	+ 0,15 mm	Upper tolerance
Tol J _B	- 0,15 mm	Lower tolerance
B ₂	22,7 mm	
J _L	125 mm	
Tol J _L	+ 0,15 mm	Upper tolerance
Tol J _L	- 0,15 mm	Lower tolerance
H ₂	50 mm	Center Height
Tol H ₂	+ 0,015 mm	Upper tolerance
Tol H ₂	- 0,015 mm	Lower tolerance
A ₃	14 mm	
T ₅	34 mm	
H ₆	77 mm	
N ₁	13 mm	
N ₃	20 mm	
G ₂	M16	Thread size
G ₃	M8x1	Thread size
α	54 °	Angle
K ₅	M12	Screw DIN 6912