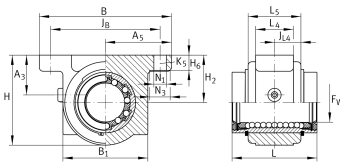
**KGB20-PP-AS** **Linear Ball Bearing and Housing Unit**

Linear ball bearing and housing unit; sealed, greased, with relubrication facility; corrosion-resistant design possible

Technical information**Your current product variant**

Size code	20
Seal	PP
Relubrication	AS

Technical data

	6	Ball rows
≈m	0,3 kg	Weight

Main Dimensions & Performance Data

F _w	20 mm	Diameter of ball complement
Tol F _w	+ 0,009 mm	Upper tolerance
Tol F _w	- 0,001 mm	Lower tolerance
H	47,5 mm	Height
L	45 mm	Length
Tol L	h12	Tolerance
B	70 mm	Width
C	1.570 N	Load capacity dyn.
C ₀	1.230 N	Load capacity stat.



Mounting dimensions

J _B	58 mm	
Tol J _B	+ 0,15 mm	Upper tolerance
Tol J _B	- 0,15 mm	Lower tolerance
B ₁	45 mm	
A ₅	35 mm	
Tol A ₅	+ 0,02 mm	Upper tolerance
Tol A ₅	- 0,02 mm	Lower tolerance
L ₄	20 mm	
L ₅	28 mm	Length of Shaft Support Block without drive System
J L ₄	14 mm	Distance
H ₂	25 mm	Center height
Tol H ₂	+ 0,015 mm	Upper tolerance
Tol H ₂	- 0,015 mm	Lower tolerance
A ₃	21 mm	
H ₆	8 mm	
N ₁	6,6 mm	
N ₃	11 mm	
K ₅	M6	
K ₈	NIPA1	Lubrication nipple