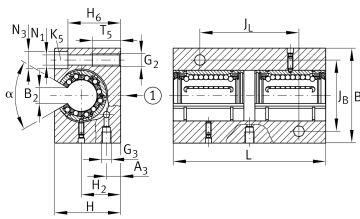
**KTBO20-PP-AS** [↗](#)

Linear Ball Bearing and Housing Unit

Linear ball bearing and housing unit; open design, sealed, greased, with relubrication facility; corrosion-resistant design possible

Technical information



Your current product variant

Size code	20
Seal	PP
Relubrication facility	AS

Main Dimensions & Performance Data

F_W	20 mm	Diameter of ball complement
H	42 mm	Height
L	104 mm	Length
B	60 mm	Width
C	2.600 N	Load capacity dyn. C
C_0	2.550 N	Load capacity stat. C0
$\approx m$	0,62 kg	Weight



Mounting dimensions

J _B	45 mm	
Tol J _B	+ 0,15 mm	Upper tolerance
Tol J _B	- 0,15 mm	Lower tolerance
B ₂	10 mm	
J _L	55 mm	
Tol J _L	+ 0,15 mm	Upper tolerance
Tol J _L	- 0,15 mm	Lower tolerance
H ₂	25 mm	Center Height
Tol H ₂	+ 0,015 mm	Upper tolerance
Tol H ₂	- 0,015 mm	Lower tolerance
A ₃	9 mm	
T ₅	18 mm	
H ₆	35,5 mm	
N ₁	6,4 mm	
N ₃	11 mm	
G ₂	M8	Thread size
G ₃	M6	Thread size
α	60 °	Angle
K ₅	M6	Screw DIN 6912