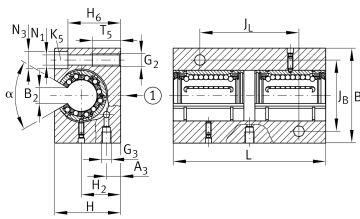
**KTBO25-PP-AS** [↗](#)

Linear Ball Bearing and Housing Unit

Linear ball bearing and housing unit; open design, sealed, greased, with relubrication facility; corrosion-resistant design possible

Technical information



Your current product variant

Size code	25
Seal	PP
Relubrication facility	AS

Main Dimensions & Performance Data

F_W	25 mm	Diameter of ball complement
H	51 mm	Height
L	130 mm	Length
B	74 mm	Width
C	4.650 N	Load capacity dyn. C
C_0	4.650 N	Load capacity stat. C0
$\approx m$	1,16 kg	Weight



Mounting dimensions

J _B	54 mm	
Tol J _B	+ 0,15 mm	Upper tolerance
Tol J _B	- 0,15 mm	Lower tolerance
B ₂	12,5 mm	
J _L	70 mm	
Tol J _L	+ 0,15 mm	Upper tolerance
Tol J _L	- 0,15 mm	Lower tolerance
H ₂	30 mm	Center Height
Tol H ₂	+ 0,015 mm	Upper tolerance
Tol H ₂	- 0,015 mm	Lower tolerance
A ₃	9 mm	
T ₅	22 mm	
H ₆	43 mm	
N ₁	8,4 mm	
N ₃	15 mm	
G ₂	M10	Thread size
G ₃	M8x1	Thread size
α	60 °	Angle
K ₅	M8	Screw DIN 6912