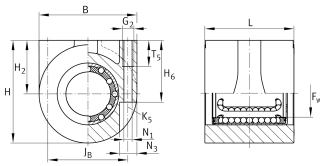
**KGHA40-PP**

## Linear Ball Bearing and Housing Unit

Linear Ball Bearing and Housing Units,  
Sealed, Greased, Corrosion-resistant Design  
Possible

## Technical information

**Your current product variant**

|           |           |
|-----------|-----------|
| Size code | 40        |
| Seal      | PP Sealed |

**Main Dimensions & Performance Data**

|                |          |                     |
|----------------|----------|---------------------|
| H              | 84 mm    | Height              |
| B              | 78 mm    | Width               |
| L              | 71 mm    | Length              |
|                | + 0,5 mm | Tolerance           |
| C              | 5.300 N  | Dynamic load rating |
| C <sub>0</sub> | 4.450 N  | Static load rating  |
| ≈m             | 1,439 kg | Weight              |

**Mounting dimensions**

|                    |          |           |
|--------------------|----------|-----------|
| H <sub>6</sub>     | 49 mm    |           |
| T <sub>5</sub>     | 20 mm    |           |
| J <sub>B</sub>     | 66 mm    |           |
| Tol J <sub>B</sub> | ± 0,1 mm | Tolerance |
| G <sub>2</sub>     | M8       |           |
| N <sub>1</sub>     | 6,7 mm   |           |
| N <sub>3</sub>     | 11,1 mm  |           |
| K <sub>5</sub>     | M6       |           |



View product details on medias

17.05.2026, 12:02:09 UTC

SCHAEFFLER

### Dimensions

|                    |            |                             |
|--------------------|------------|-----------------------------|
| F <sub>w</sub>     | 40 mm      | Diameter of ball complement |
| H <sub>2</sub>     | 45 mm      | Axis center                 |
| Tol H <sub>2</sub> | ± 0,015 mm | Tolerance                   |