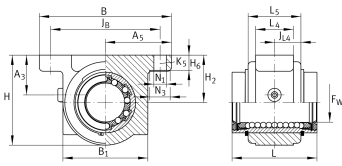
**KGB12-PP-AS**

Linear Ball Bearing and Housing Unit

Linear ball bearing and housing unit; sealed, greased, with relubrication facility; corrosion-resistant design possible

Technical information



Your current product variant

Size code	12
Seal	PP
Relubrication facility	AS

Technical data

	5	Ball rows
≈m	0,1 kg	Weight

Main Dimensions & Performance Data

F _w	12 mm	Diameter of ball complement
Tol F _w	+ 0,008 mm	Upper tolerance
H	35,8 mm	Height
L	32 mm	Length
Tol L	h12	Tolerance
B	52 mm	Width
C	540 N	Load capacity dyn.
C ₀	385 N	Load capacity stat.



Mounting dimensions

J _B	42 mm	
Tol J _B	+ 0,15 mm	Upper tolerance
Tol J _B	- 0,15 mm	Lower tolerance
B ₁	31,6 mm	
A ₅	26 mm	
Tol A ₅	+ 0,02 mm	Upper tolerance
Tol A ₅	- 0,02 mm	Lower tolerance
L ₄	12 mm	
L ₅	20 mm	Length of Shaft Support Block without drive System
J L ₄	10 mm	Distance
H ₂	20 mm	Center height
Tol H ₂	+ 0,015 mm	Upper tolerance
Tol H ₂	- 0,015 mm	Lower tolerance
A ₃	15 mm	
H ₆	6 mm	
N ₁	5,5 mm	
N ₃	10 mm	
K ₅	M5	
K ₈	NIPA1	Lubrication nipple