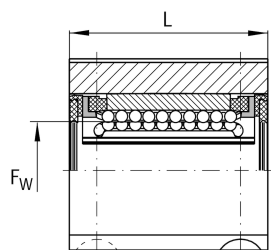
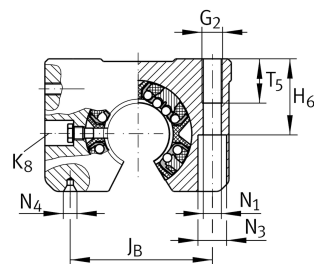
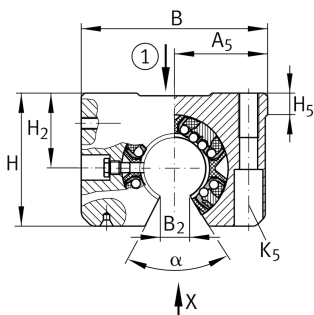


**KGSNO20-PP-AS** **Linear Ball Bearing and Housing Unit**

Linear ball bearing and housing unit; Heavy duty range, With segment cutout, without slot, sealed, greased, with relubrication facility

Technical information

**Your current product variant**

Size code	20
Seal	PP
Relubrication	AS

Technical data

	6	Ball rows
≈m	0,2 kg	Weight

Main Dimensions & Performance Data

F _w	20 mm	Diameter of ball complement
H	42 mm	Height
L	45 mm	Length
B	60 mm	Width
C _{max}	2.200 N	Load capacity dyn.
C _{0 max}	2.310 N	Load capacity stat.



Mounting dimensions

J _B	45 mm	
Tol J _B	+ 0,15 mm	Upper tolerance
Tol J _B	- 0,15 mm	Lower tolerance
B ₂	10 mm	
A ₅	30 mm	
Tol A ₅	+ 0,01 mm	Upper tolerance
Tol A ₅	- 0,01 mm	Lower tolerance
J _L	32 mm	Distance
Tol J _L	+ 0,15 mm	Upper tolerance
Tol J _L	- 0,15 mm	Lower tolerance
H ₂	25 mm	Center height
Tol H ₂	+ 0,008 mm	Upper tolerance
Tol H ₂	- 0,016 mm	Lower tolerance
H ₅	8 mm	
T ₅	18 mm	
H ₆	24 mm	
G ₂	M8	
N ₁	6,6 mm	
N ₄	2x4.25	
N ₃	11 mm	
K ₅	M6	
K ₈	NIP4MZ	Lubrication nipple
α	55 °	Angle