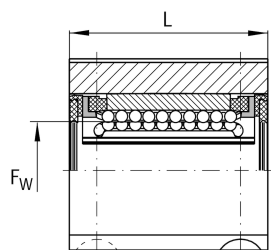
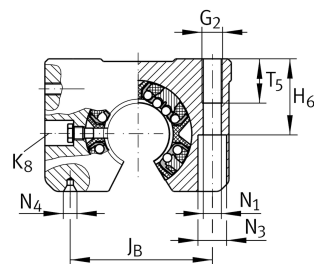
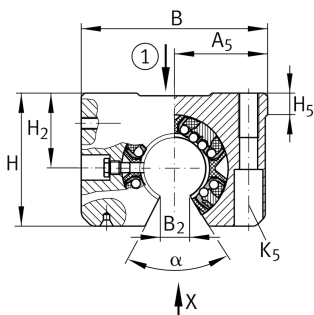
**KGSNO40-PP-AS** **Linear Ball Bearing and Housing Unit**

Linear ball bearing and housing unit; Heavy duty range, With segment cutout, without slot, sealed, greased, with relubrication facility

## Technical information

**Your current product variant**

Size Code	40
Seal	PP
Relubrication facility	AS

**Technical data**

	6	Ball rows
≈m	1,4 kg	Weight

**Main Dimensions & Performance Data**

F <sub>w</sub>	40 mm	Diameter of ball complement
H	77 mm	Height
L	80 mm	Length
B	108 mm	Width
C <sub>max</sub>	10.200 N	Load capacity dyn.
C <sub>0 max</sub>	9.600 N	Load capacity stat.



### Mounting dimensions

J <sub>B</sub>	86 mm	
Tol J <sub>B</sub>	+ 0,15 mm	Upper tolerance
Tol J <sub>B</sub>	- 0,15 mm	Lower tolerance
B <sub>2</sub>	18,2 mm	
A <sub>5</sub>	54 mm	
Tol A <sub>5</sub>	+ 0,01 mm	Upper tolerance
Tol A <sub>5</sub>	- 0,01 mm	Lower tolerance
J <sub>L</sub>	58 mm	Distance
Tol J <sub>L</sub>	+ 0,15 mm	Upper tolerance
Tol J <sub>L</sub>	- 0,15 mm	Lower tolerance
H <sub>2</sub>	45 mm	Center height
Tol H <sub>2</sub>	+ 0,008 mm	Upper tolerance
Tol H <sub>2</sub>	- 0,016 mm	Lower tolerance
H <sub>5</sub>	12,4 mm	
T <sub>5</sub>	26 mm	
H <sub>6</sub>	44 mm	
G <sub>2</sub>	M12	
N <sub>1</sub>	10,5 mm	
N <sub>4</sub>	3.15x6.7	
N <sub>3</sub>	18 mm	
K <sub>5</sub>	M10	
K <sub>8</sub>	NIP5MZ	Lubrication nipple
α	56 °	Angle