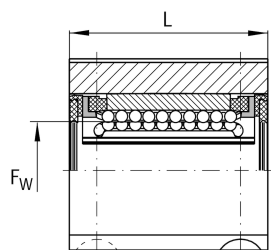
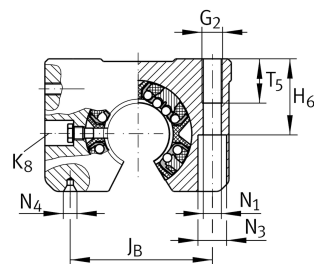
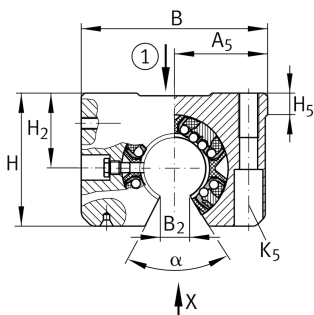


**KGSNO50-PP-AS** **Linear Ball Bearing and Housing Unit**

Linear ball bearing and housing unit; Heavy duty range, With segment cutout, without slot, sealed, greased, with relubrication facility

Technical information

**Your current product variant**

Size code	50
Seal	PP
Relubrication facility	AS

Technical data

	6	Ball rows
≈m	2,67 kg	Weight

Main Dimensions & Performance Data

F _w	50 mm	Diameter of ball complement
H	88 mm	Height
L	100 mm	Length
B	132 mm	Width
C _{max}	15.100 N	Load capacity dyn.
C _{0 max}	13.900 N	Load capacity stat.



Mounting dimensions

J _B	108 mm	
Tol J _B	+ 0,15 mm	Upper tolerance
Tol J _B	- 0,15 mm	Lower tolerance
B ₂	22,7 mm	
A ₅	66 mm	
Tol A ₅	+ 0,01 mm	Upper tolerance
Tol A ₅	- 0,01 mm	Lower tolerance
J _L	50 mm	Distance
Tol J _L	+ 0,15 mm	Upper tolerance
Tol J _L	- 0,15 mm	Lower tolerance
H ₂	50 mm	Center height
Tol H ₂	+ 0,008 mm	Upper tolerance
Tol H ₂	- 0,016 mm	Lower tolerance
H ₅	11,1 mm	
T ₅	35 mm	
H ₆	49 mm	
G ₂	M16	
N ₁	13,5 mm	
N ₄	4x8.5	
N ₃	20 mm	
K ₅	M12	
K ₈	NIP5MZ	Lubrication nipple
α	54 °	Angle