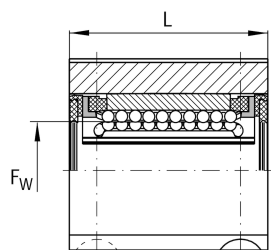
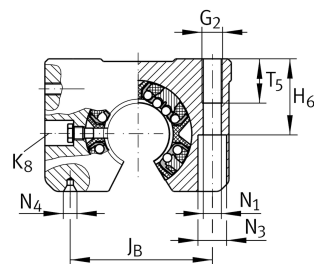
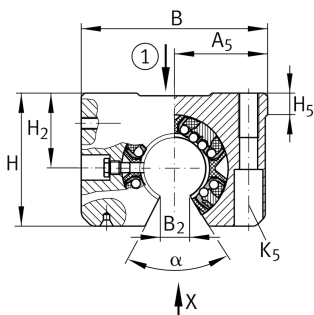


**KGSNOS16-PP-AS**

Linear Ball Bearing and Housing Unit

Linear ball bearing and housing unit; Heavy duty range, With segment cutout, with slot, sealed, greased, with relubrication facility

Technical information

**Your current product variant**

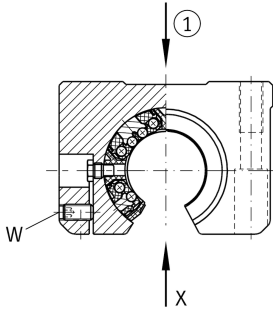
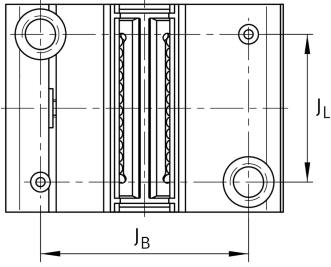
Size code	16
Seal	PP
Relubrication facility	AS

Technical data

	6	Ball rows
≈m	0,15 kg	Weight

Main Dimensions & Performance Data

F _w	16 mm	Diameter of ball complement
H	35 mm	Height
L	37 mm	Length
B	53 mm	Width
C _{max}	1.430 N	Load capacity dyn.
C _{0 max}	1.550 N	Load capacity stat.



Mounting dimensions

J_B	40 mm	
Tol J_B	+ 0,15 mm	Upper tolerance
Tol J_B	- 0,15 mm	Lower tolerance
A_5	26,5 mm	
Tol A_5	+ 0,01 mm	Upper tolerance
Tol A_5	- 0,01 mm	Lower tolerance
B_2	10,1 mm	
J_L	26 mm	Distance
Tol J_L	+ 0,15 mm	Upper tolerance
Tol J_L	- 0,15 mm	Lower tolerance
H_2	22 mm	Center height
Tol H_2	+ 0,008 mm	Upper tolerance
Tol H_2	- 0,016 mm	Lower tolerance
H_5	7,5 mm	
T_5	13 mm	
H_6	21 mm	
G_2	M6	
N_1	5,3 mm	
N_4	1.6x3.35	
N_3	10 mm	
K_5	M5	
K_8	NIP4MZ	Lubrication nipple
W	2,5 mm	Width across flats
α	68 °	Angle