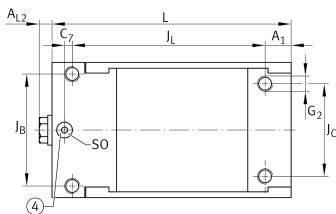
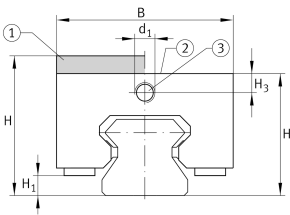


### BKE.TSX55-D-SO [↗](#)

#### Braking/clamping element

Braking and clamping element BKE.TSX..-D, hydraulic connector on top face, for linear recirculating roller bearing and guideway assembly

## Technical information



### Your current product variant

Size code	55
Version	D
Oil feed	SO Oil feed from above

### Main Dimensions & Performance Data

H	70 mm	Height system
	without	Adapter plate
B	99 mm	Width of braking and clamping element
L	170 mm	Length braking and clamping element
	5.100 N	Clamping force
≈m	7,25 kg	Weight



### Dimensions

J <sub>B</sub>	80 mm	Hole pattern
J <sub>C</sub>	72 mm	Hole pattern
A <sub>1</sub>	18 mm	Distance
J <sub>L</sub>	138 mm	Hole pattern
H <sub>1</sub>	17 mm	Space (system)
H <sub>3</sub>	11,75 mm	Mounting dimension
A <sub>L2</sub>	6 mm	Distance
d <sub>1</sub>	M10x1	Size thread
G <sub>2</sub>	M12	Size thread above for DIN ISO 4762-12.9
M <sub>A</sub>	144 Nm	Tightening torque above